



## Protein Skimmer User Manual

Product's Name: Internal Protein Skimmer Curve Elite Series

Model	Valid Aquarium	Pump Model
CURVE 5 ELITE	80-130 gallons	SICCE SK 200
CURVE 7 ELITE	130-230 gallons	SICCE PSK 1000
CURVE 9 ELITE	230-400 gallons	SICCE PSK 1200

**Packaging Overview:** collection cup, skimmer body, bottom board, water draining system, venturi with tubing, water pump, and user manual.

### Parts List:

1.	Lid	11.	Nylon Screws (10)
2.	Collection Cup	12.	Pump Mounts (2)
3.	Drain Tube/Outlet	13.	Bottom Board
4.	O-Ring Cup Outlet	14.	O-Ring Muffler
5.	Skimmer body	15.	Muffler



6.	Diffuser Plate	16.	Water Output Adjusted Valve
7.	Pump outlet (Locknut for 7/9 ELITE)	17.	Air Intake Tube
8.	Leading Box	19.	Vanturi
9.	Lower Diffuser Plate	19.	Gel mat (4)
10.	Water Pump		

**\*\* Note:** parts may come pre-assembled.

### Installation:

1. Mount the pump to board.
  - a. The board has a slot for the power cord; position the pump accordingly.
  - b. Make sure the screws are secured.
  - c. Do not over tighten.
2. Mount the lower plate to the pump.
  - a. Tighten the locking nut.
3. Mount the upper plate and lead wall over the lower.
  - a. Tighten the long nylon screw.
4. Assemble the skimmer body with adjustment tube.
  - a. Connect the intake tube to the venturi.
5. Mount the skimmer body to the board.
  - a. Ensure the venturi hole lines up with the outlet of the water pump.
  - b. Fasten the screws.
6. Side the verturi through the skimmer body, connecting it to the water pump.
7. Mount the collection cup to the skimmer body
  - a. Make sure the outlet of the cup has an o-ring.
8. Connect the drain tube to the cup's outlet.
9. After complete assembly, the unit is ready for use.
  - a. Submerge the unit with water.
  - b. Connect power cord to an electric socket (GFI certified outlet).
  - c. Make your adjustments using the adjustment tube.

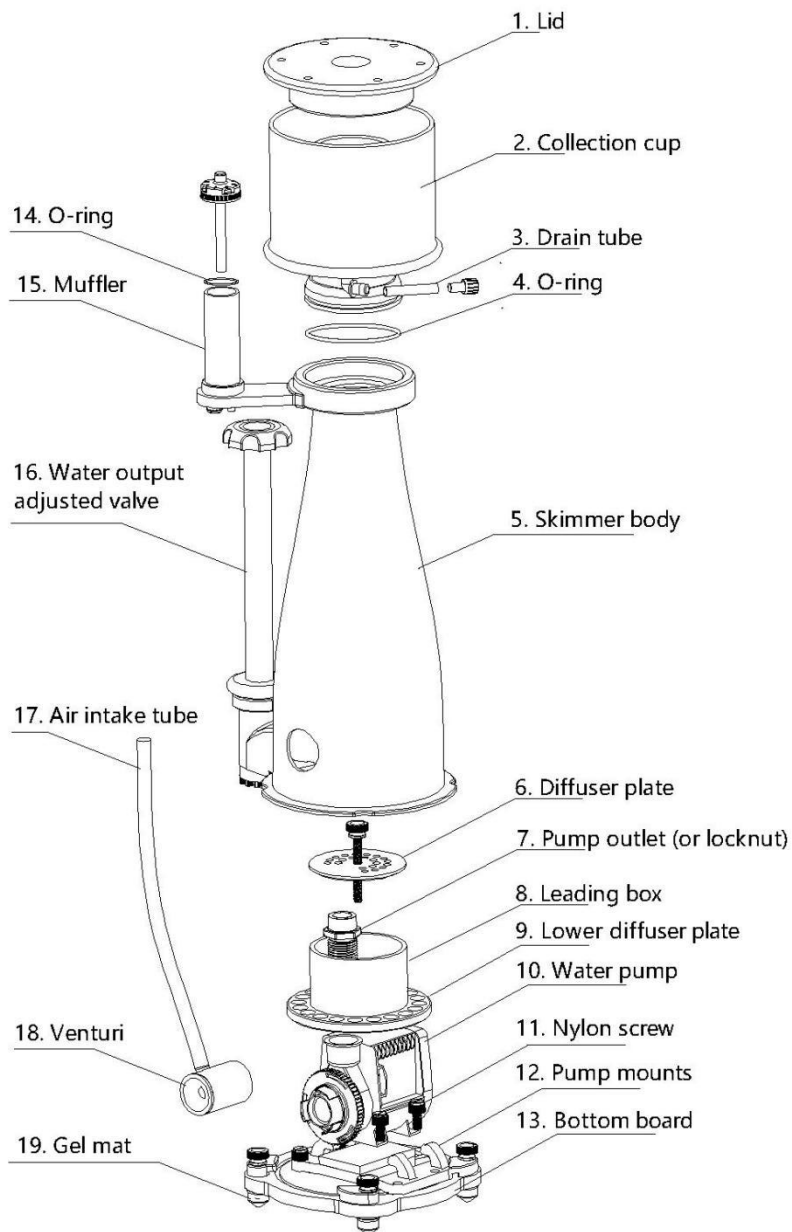


#### **Maintenance:**

1. Service the collection cup and the neck regularly.
2. Disassemble and clean the venturi and pump every 3 to 6 months.
  - a. Disassemble, inspect, and clean the impeller to maximize life and performance.
3. A complete skimmer cleaning is recommended every 6 to 12 months.
4. Avoid using harsh cleaning chemicals and soaps. A 50/50 vinegar bath is recommended.

#### **Further Comments:**

1. ***Do not run the pump dry.*** Make sure that it is submerged already before operation.
2. After successful installation, bubbles will appear when the pump is active. Otherwise, restart the system. If the problem persist then contact Sea Side Aquatics for support.
3. New skimmers may require a break-in period of a few days or more.
4. Suggested external water level is 25-27 cm.
5. Each unit has been pre-tested at the factory to ensure that the unit is in working order. Some traces of water is normal; the unit and all of its components are new.



CURVE 5/7/9 ELITE  
Installation sketch map