

The background of the entire page is a photograph of aquarium equipment. It shows a grey plastic filter housing with multiple slots, some of which contain red and black filter cartridges. A white PVC pipe runs horizontally across the middle of the image. To the right, there's a circular metal component, possibly part of a pump or filter. The overall scene is dimly lit, focusing on the mechanical parts of the aquarium system.

AQUAKING RED LABEL PRODUCT CATALOG

INDEX	
AQUAKING RED LABEL	03
PRODUCT DEVELOPMENT	04
CUSTOM DESIGN	06
DRUMFILTERS	08
DRUMFILTERS XL	12
MOVING BEDFILTERS & SETS	14
COMBIFILTERS	18
COMBIFILTERS XL	20
DRUMFILTERS PLUG & PLAY M	24
COMBIFILTERS PLUG & PLAY L	26
COMBIFILTERS PLUG & PLAY XL	28
COMBI DRUM PLUG & PLAY PIT	30
LEAF COLLECTORS	32
BASIC DRUM & BASIC COMBIFILTERS	34
CHAMBER FILTERS	36
TRICKLE TOWERS	38
PROTEIN SKIMMER & BOTTOMDRAIN	40
POND PUMPS	42
UVC FILTERS	46
AIR PUMPS	48
RUBBER COUPLINGS	50
PARTS & COMPONENTS	52
INFO FILTER SET-UPS	59

Aquaking Red Label

Headoffice:
Aquaking Red Label
Huisbergenweg 3
5249 JR Rosmalen

T: +31(0)73 521 27 30
F: +31(0)73 521 19 80

Production & warehouse:
Aquaking Red Label
Bart van Slobbestraat 16C
6471 WV Eygelshoven

T: +31(0)45 53 55 220

Bank: ABN AMRO
IBAN: NL07ABNA0535481756
BIC/SWIFT: ABNANL2A
BTW: NL805933840B01

AquaKing reserves the right to alter and/or change any of the specified information within this catalogue/brochure. All product information including, details, pricing and quantities is subject to change.



AQUAKING RED LABEL

We are proud to present our Red Label Filter systems and products. The foundation of this range of filters and filtration products begins with the Red Label Drum Filter. The Dutch manufactured and produced filter is made of Polypropylene (PP) and features a meshed, 70 micron gauze on the drum which offers the best conceivable mechanical filtration. Innovative design and high quality materials combine to create a user-friendly and sustainable, well operating unit that is unrivaled.

The ideal addition to the Red Label Drum Filter is the Red Label Moving Bed Filter. Combining these two systems creates a near perfect biological environment for your pond waters. The two filter systems working in unison create a natural, healthy bacterial culture while degradation of harmful substances is maintained.

With the two filters operating separately but together, Red Label created an alternative option in a Combi Filter system. The Combi amalgamates the two separate filters into one compact unit which is easy to install.

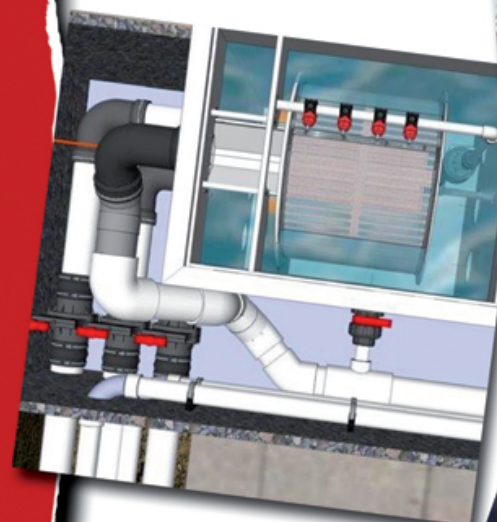
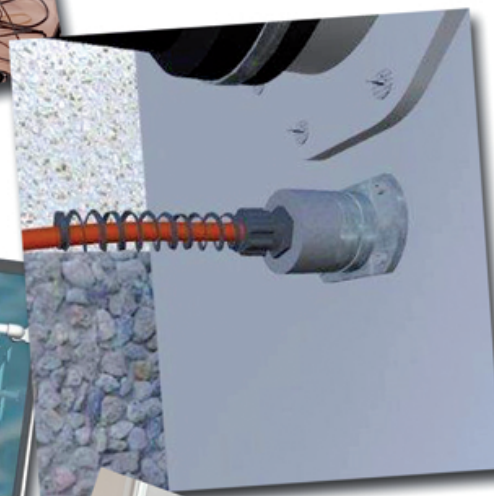


Red Label offers a wide range of products that can be used in combination with the filter systems. The products include high-end pond pumps to Ultra Violet equipment and bottom-drains. We also recommend top products from other manufacturers in this catalogue that will deliver the absolute best results in your pond system and set-up.

Red Label Filter systems and products offer complete, efficient and suitable solutions to almost any situation. If you have any queries please feel free to contact us at your convenience; info@aquaking.nl or by met 073-521 27 30.

Team AquaKing Red Label





PRODUCT DEVELOPMENT

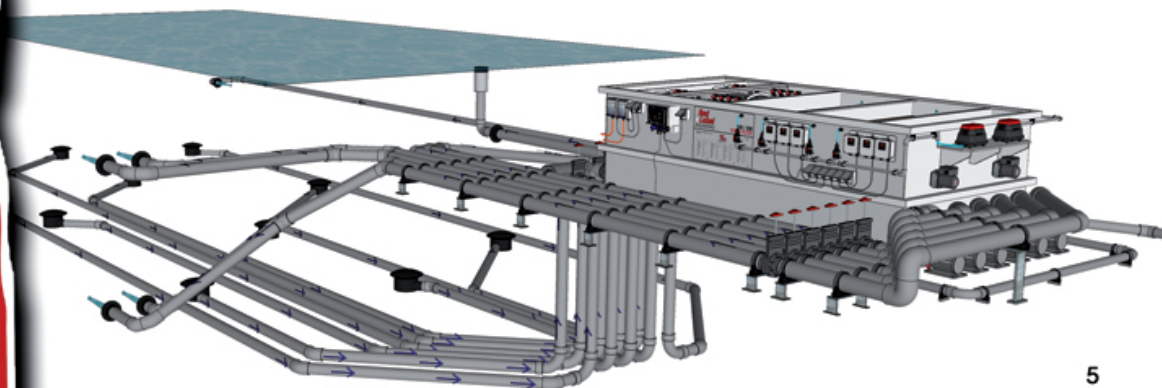
The Red Label Product Development department is continuously striving to improve and apply new, innovative techniques to filter solutions. We listen to our clients and customer feedback and focus on the questions and practical situations end users come across. This offers us better ways of problem solving and providing better solutions.

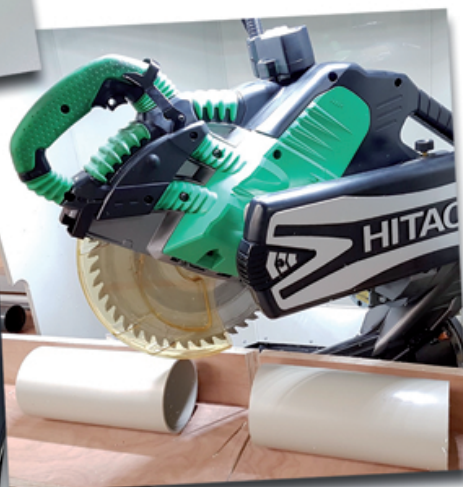
We frequently consult with our dealers, horticulturalists and hobbyists alike to keep ahead of the competition but also to remain completely informed on practical requirements. The gathered information and feedback is directly utilized in the production process.

We at Red Label are consciously active in our production process in ensuring that the used materials have no impact on endangering the environment. We go to great measures in keeping our production warehouse thoroughly clean and up-to-date with the latest technological advancements to minimize any potential risks. We only use suppliers that conform with our strict quality and environmental standards. All used materials are monitored and quality checks maintained to ensure that we produce only the best filter systems with no repercussions.

Our extensive experience in filtration and product development results in a wide range of Red Label Filters. We offer filter systems for almost any situation, ranging from Trickle Towers and Multi chamber filters to the most advanced filter systems available; the 'Plug & Play', all-in-one filter units.

If you have any queries or would like to provide feedback or suggestions, please contact us at your convenience.





CUSTOM DESIGN

AquaKing Red Label is proudly manufactured at our own warehouse facilities in the Netherlands. The production warehouse has been specially designed to accommodate the manufacturing of our Red Label filters. Using state-of-the-art equipment, trained and experienced staff and integrating the latest production techniques we are able to produce our line of filter systems speedily and efficiently. Producing and delivering only the best filtration systems is our priority.

The production time is kept to a strict deadline and is, compared to other production facilities, extremely quick which in turn makes our delivery times flexible and short.



Every specific pond situation requires its own suitable solution. Red Label offers a wide range of basic filtration systems in various unique forms; Trickle Towers, Plug & Play and Combination filters. However, some situations may require a custom made solution. This can range from a simple input/output channel to producing a complete, one-of-a-kind custom designed filter. We will consult with you and analyse your situation to determine what is necessary and best suited.

You're in safe and capable hands at Red Label.



DRUM FILTERS

The Red Label Drum Filter is a mechanical pre-filter system that can easily filter out the finest and smallest dirt, grime and water pollution (down to 70 micron) from your pond water.

The pond water passes through the drum filter, either pump fed or on a gravity installation, the mesh or gauze on the drum cylinder filters out and gathers all the filth and fine dirt particles. This is then flushed out of the filter system with the drum Sprayers.

Should the build-up and collection of filth become too dense then the water levels in the drum filter will drop as less water passes through. The water sensor measures the water levels in the drum filter, when levels drop below the set level, the spray pump is activated setting off the sprayers which then in turn blast away all the gathered filth into a built-in discharge gutter. The discarded waste and washed out into the sewer lines. Water levels will return to set levels once the spraying cycle has been completed and repeat at determined intervals or when water levels drop.

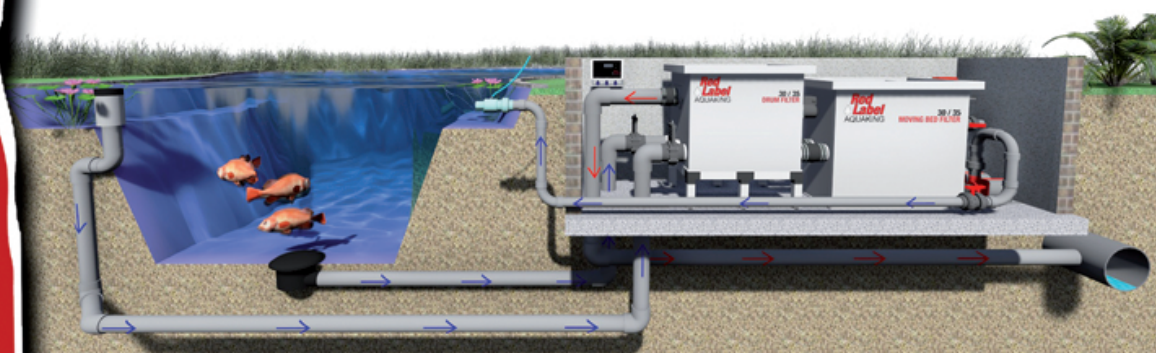


The drum mesh or gauze material filters out pollution down to 70 micron. Smaller or finer particles are purposely kept in the pond waters as it is necessary to help build a healthy bacterial culture and biological environment.



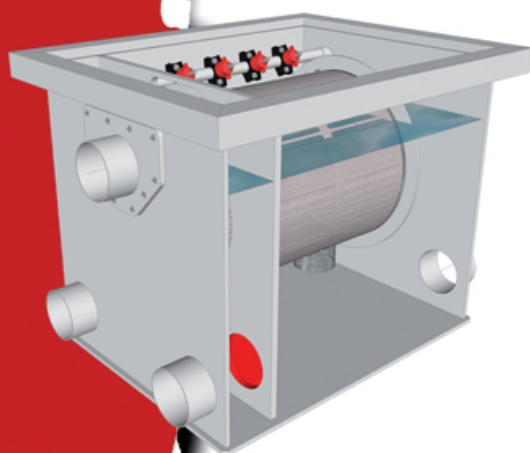
Aquaking Red Label
general specifications
drum filters:

- High quality polypropylene
- Stainless steel panels 70 mu
- Built-in flushpump
- Includes controller box
- Pressure sensor operated
- Adjustable sprayer timing
- Low water level safety
- Includes cover
- Cover security
- Multi language manual
- Includes servicedesk
- 2 year warranty
- Made in the Netherlands



DRUMFILTER

F2030001

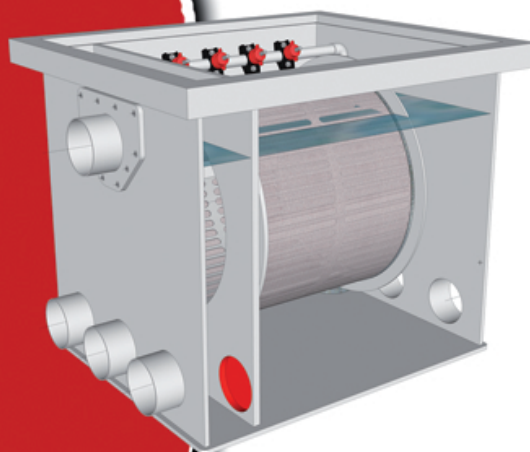


20/25

Measurements L x W x H	970 x 650 x 630 mm
Panel size	400 x 400 mm
Maximum flow	25.000 liter
Maximum pond size	50.000 liter
Inlet	2x 110 mm
Outlet	2x 110 mm

DRUMFILTER

F2030002

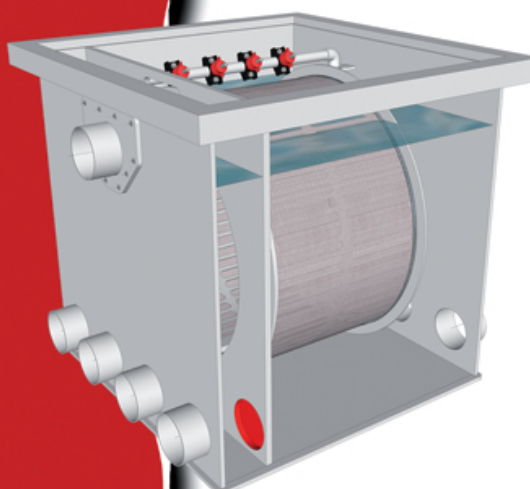


30/35

Measurements L x W x H	995 x 700 x 685 mm
Panel size	400 x 500 mm
Maximum flow	35.000 liter
Maximum pond size	70.000 liter
Inlet	3x 110 mm
Outlet	3x 110 mm

DRUMFILTER

F2030003



50/55

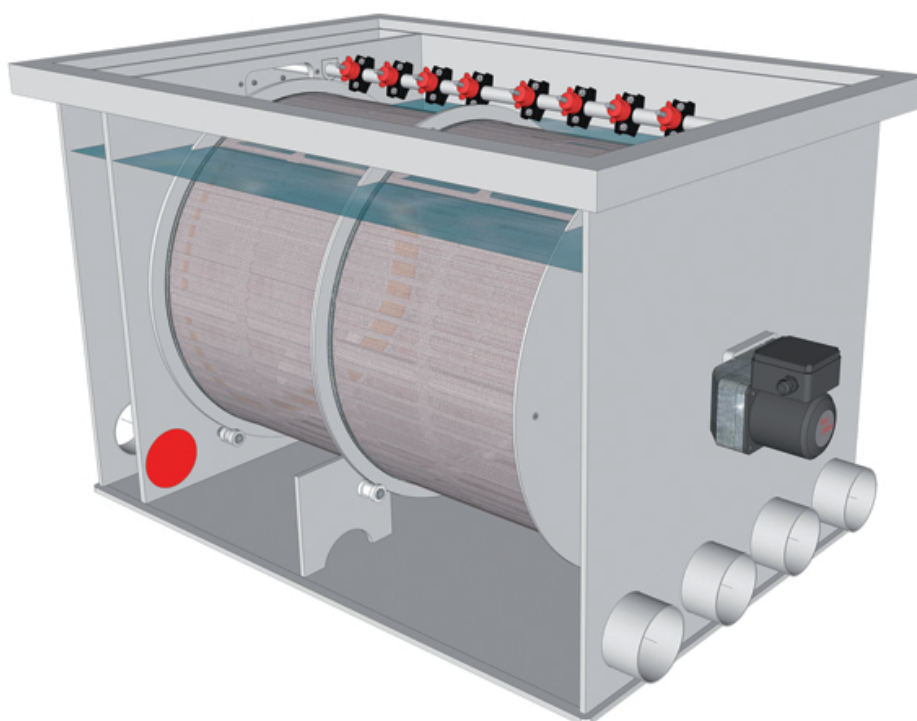
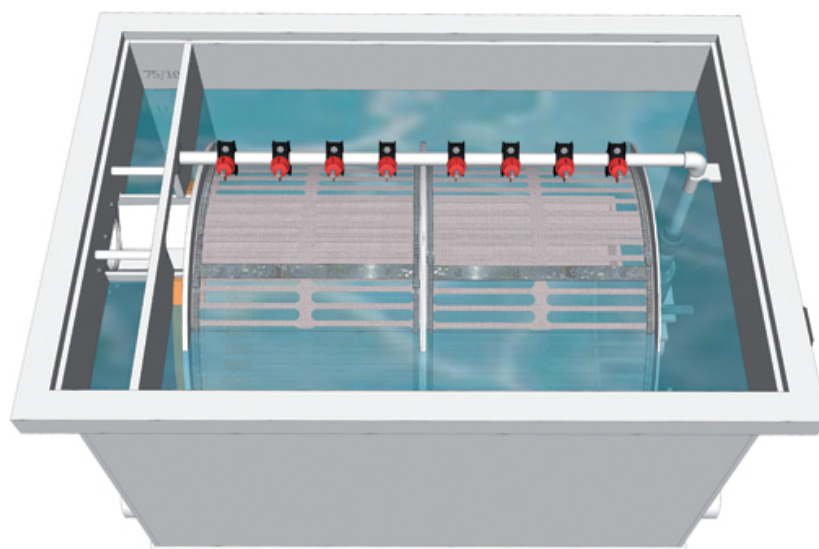
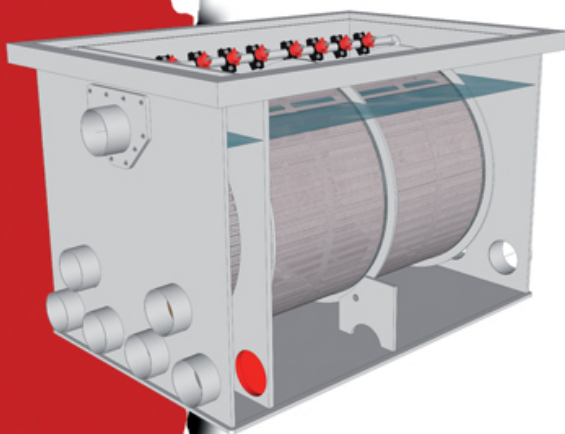
Measurements L x W x H	995 x 850 x 785 mm
Panel size	400 x 650 mm
Maximum flow	55.000 liter
Maximum pond size	110.000 liter
Inlet	4x 110 mm
Outlet	4x 110 mm

DRUMFILTER

F2030004

75/100

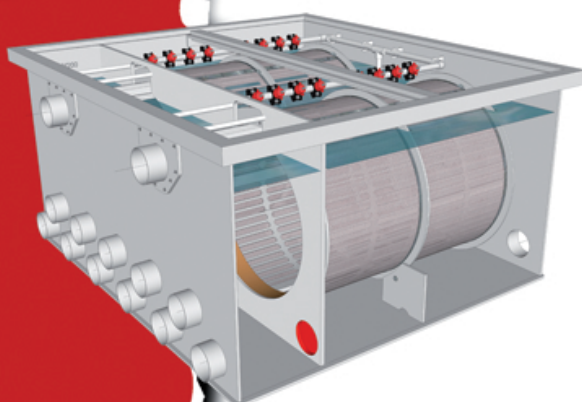
Measurements L x W x H	1390 x 850 x 785 mm
Panel size	650 x 800 mm
Maximum flow	90.000 liter
Maximum pond size	180.000 liter
Inlet	6x 110 mm
Outlet	4x 110 mm



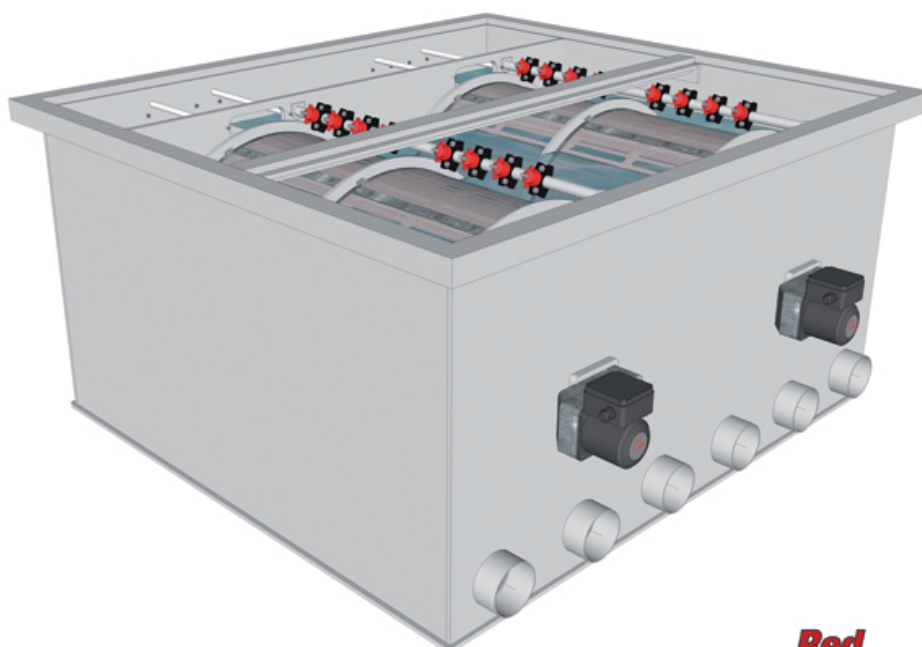
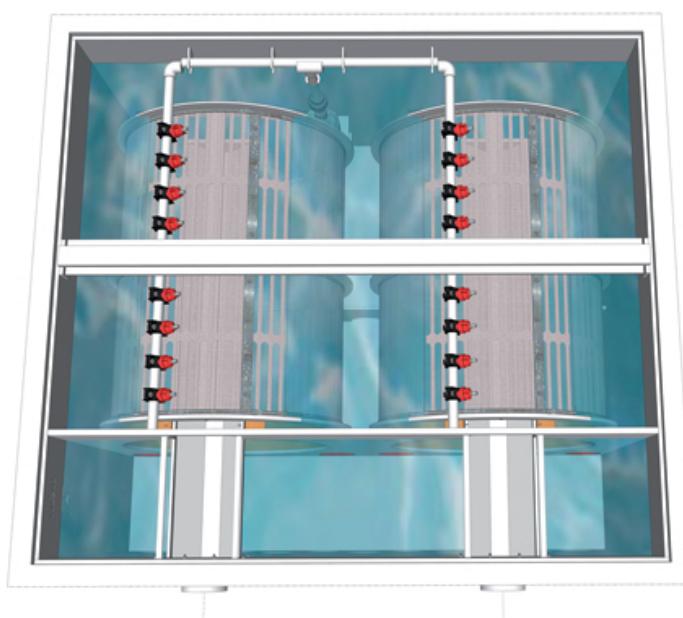
DRUMFILTER

F2030005

100/200 XL



Measurements L x W x H	1580 X 1576 X 785 mm
Panel size	2x 650 x 800 mm
Maximum flow	180.000 liter
Maximum pond size	360.000 liter
Inlet	11x 110 mm
Outlet	6x 110 mm



DRUM FILTERS XL

The Red Label Drum Filter is a mechanical pre-filter system that can easily filter out the finest and smallest dirt, grime and water pollution (down to 70 micron) from your pond water.

The pond water passes through the drum filter, either pump fed or on a gravity installation, the mesh or gauze on the drum cylinder filters out and gathers all the filth and fine dirt particles. This is then flushed out of the filter system with the drum Sprayers.

Should the build-up and collection of filth become too dense then the water levels in the drum filter will drop as less water passes through. The water sensor measures the water levels in the drum filter, when levels drop below the set level, the spray pump is activated setting off the sprayers which then in turn blast away all the gathered filth into a built-in discharge gutter. The discarded waste and washed out into the sewer lines. Water levels will return to set levels once the spraying cycle has been completed and repeat at determined intervals or when water levels drop.

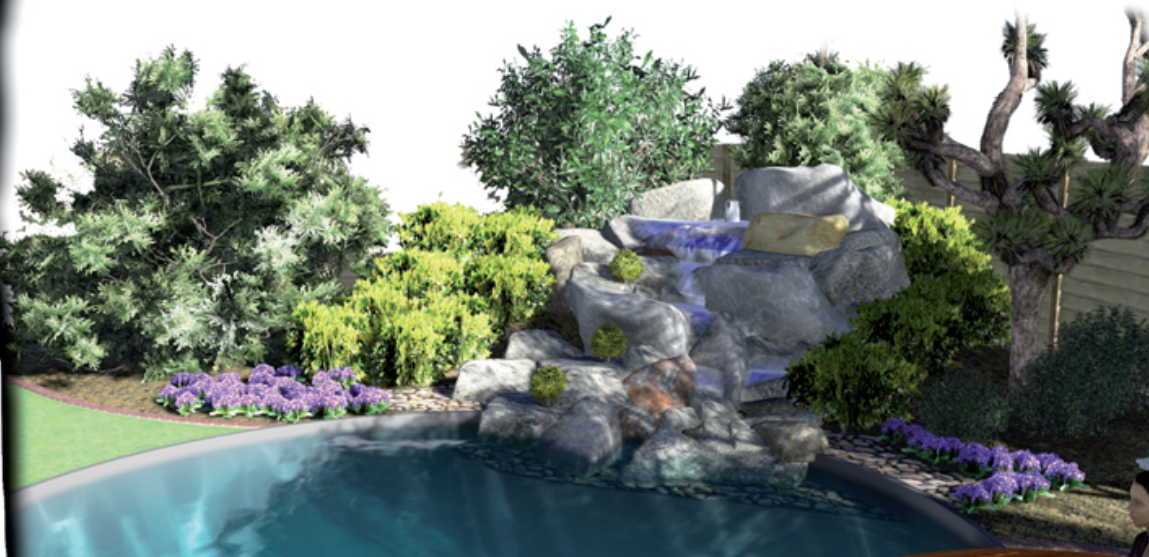
The drum mesh or gauze material filters out pollution down to 70 micron. Smaller or finer particles are purposely kept in the pond waters as it is necessary to help build a healthy bacterial culture and biological environment.



The XL version has an extended front chamber that is 300% larger than the regular Drum Filter. This creates a higher flow rate and stable waters within the filter system. The larger chamber room also allows larger, longer UV-C units to be installed. The drainage channel and drum are because of this extra room easier to access for maintenance.

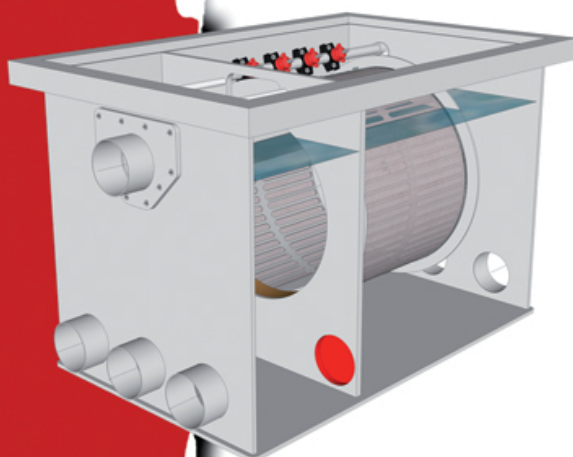
Aquaking Red Label
general specifications
drum filters XL:

- High quality polypropylene
- Stainless steel panels 70 mu
- Built-in flushpump
- Includes controller box
- Pressure sensor operated
- Adjustable sprayer timing
- Low water level safety
- Includes cover
- Cover security
- Multi language manual
- Includes servicedesk
- 2 year warranty
- Made in the Netherlands



DRUMFILTER

F2030009

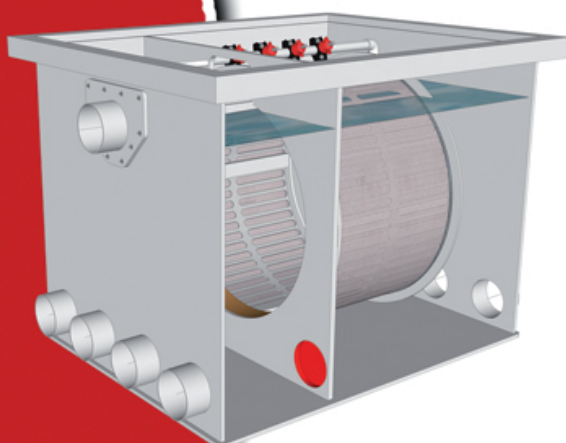


30/35 XL

Measurements L x W x H	1230 x 700 x 685 mm
Panel size	400 x 500 mm
Maximum flow	35.000 liter
Maximum pond size	70.000 liter
Inlet	3x 110 mm
Outlet	3x 110 mm

DRUMFILTER

F2030008

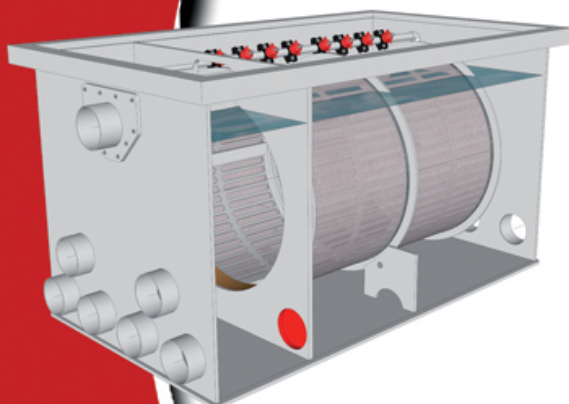


50/55 XL

Measurements L x W x H	1230 x 850 x 785 mm
Panel size	400 x 650 mm
Maximum flow	55.000 liter
Maximum pond size	110.000 liter
Inlet	4x 110 mm
Outlet	4x 110 mm

DRUMFILTER

F2030007



75/100 XL

Measurements L x W x H	1615 X 850 X 785 mm
Panel size	800 x 650 mm
Maximum flow	90.000 liter
Maximum pond size	180.000 liter
Inlet	6x 110 mm
Outlet	4x 110 mm

MOVING BED FILTERS

The ideal addition to the Red Label Drum Filter is the Red Label Moving Bed Filter. Combining these two systems creates a near perfect biological environment for your pond waters. The two filter systems working in unison create a natural, healthy bacterial culture while degradation of harmful substances is maintained.

After the dirt and grime has been removed from the pond waters in the drum filter, the water enters the Moving Bed filter which is a biological filter environment. In this filtering phase the water is brought into contact with healthy bacteria that has been brought into contact with bio-carrier, which helps stimulate the growth of a bacterial culture. The bio-carrier is kept in motion by two supplied and fixed in place air stone tubes. These two tubes constantly and rapidly exude oxygen through the stones pores, this results in continuous movement.

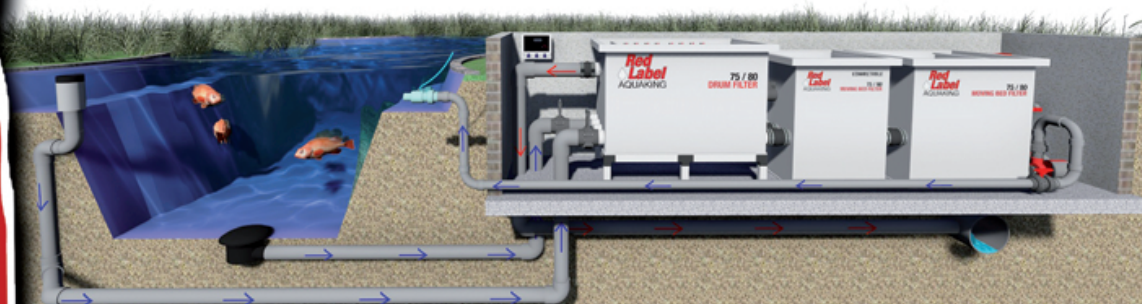


In order to create an optimal biological environment within the pond waters and filtration system, it is important that certain 'pollution' particles pass through the drum filter and into the Moving Bed chamber. This way the healthy bacteria can grow and feed into the pond life, creating healthy waters that are still clean and clear for your pond and all other harmful substances have been removed.



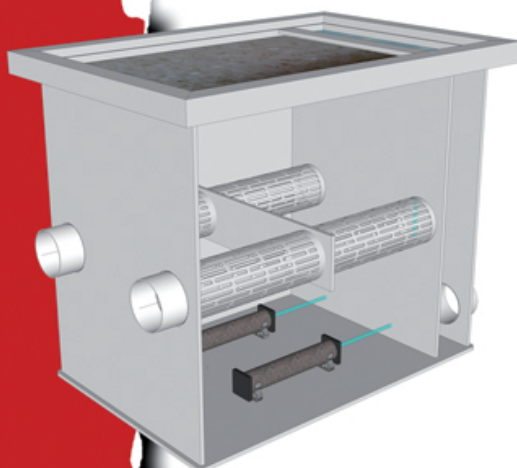
Aquaking Red Label
general specifications
moving bed filters:

- High-quality Polypropylene
- Unique grid tubing
- Includes airtubes
- Biocarrier 955 m²/m³
- Multi language manual
- Includes servicedesk
- 2 year warranty
- Made in the Netherlands



MOVING BEDFILTER

F2020001

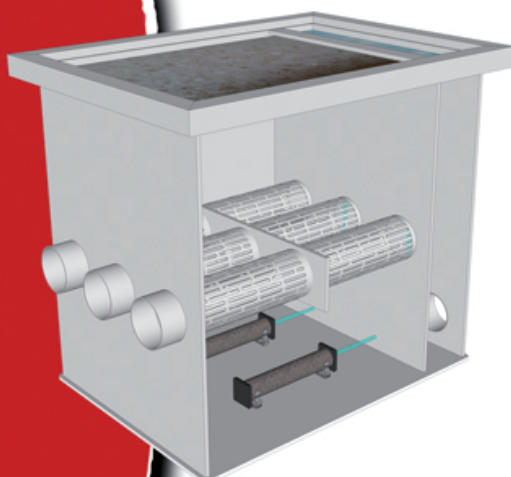


20/25

Measurements L x W x H	970 x 650 x 780 mm
Maximum flow	25.000 liter
Maximum pond size	50.000 liter
Inlet	2x 110 mm
Outlet	2x 110 mm
Air tubes	2x 50 x 300 mm
Biocarrier	100 liter

MOVING BEDFILTER

F2020002

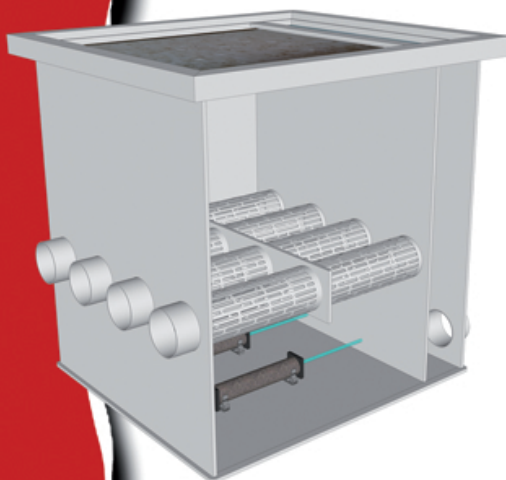


30/35

Measurements L x W x H	970 x 700 x 830 mm
Maximum flow	35.000 liter
Maximum pond size	70.000 liter
Inlet	3x 110 mm
Outlet	3x 110 mm
Air tubes	2x 50 x 300 mm
Biocarrier	100 liter

MOVING BEDFILTER

F2020005



50/55 & 75/100

Measurements L x W x H	970 x 850 x 940 mm
Maximum flow	55.000 - 90.000 liter
Maximum pond size	110.000 - 180.000 liter
Inlet	4x 110 mm
Outlet	4x 110 mm
Air tubes	2x 50 x 300 mm
Biocarrier	100 liter

CONNECTOR FILTERS

The ideal addition to the Red Label Drum Filter is the Red Label Moving Bed Filter. Combining these two systems creates a near perfect biological environment for your pond waters. The two filter systems working in unison create a natural, healthy bacterial culture while degradation of harmful substances is maintained.

After the dirt and grime has been removed from the pond waters in the drum filter, the water enters the Moving Bed filter which is a biological filter environment. In this filtering phase the water is brought into contact with healthy bacteria that has been brought into contact with bio-carrier, which helps stimulate the growth of a bacterial culture. The bio-carrier is kept in motion by two supplied and fixed in place air stone tubes. These two tubes constantly and rapidly exude oxygen through the stones pores, this results in continuous movement.

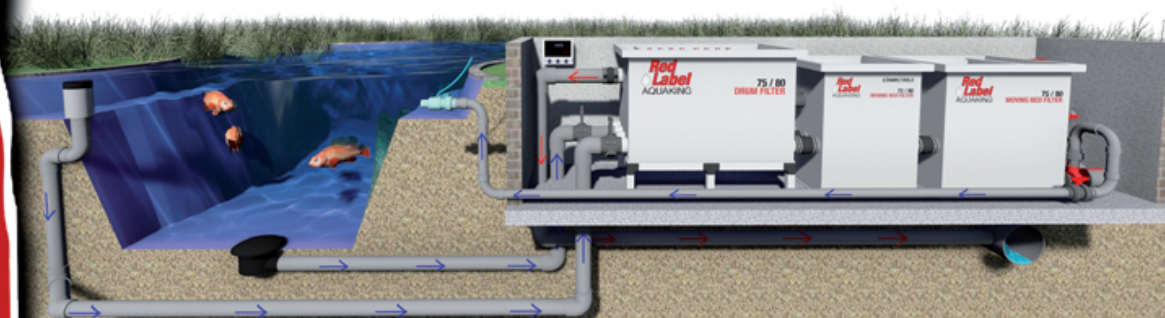


In order to create an optimal biological environment within the pond waters and filtration system, it is important that certain 'pollution' particles pass through the drum filter and into the Moving Bed chamber. This way the healthy bacteria can grow and feed into the pond life, creating healthy waters that are still clean and clear for your pond and all other harmful substances have been removed.



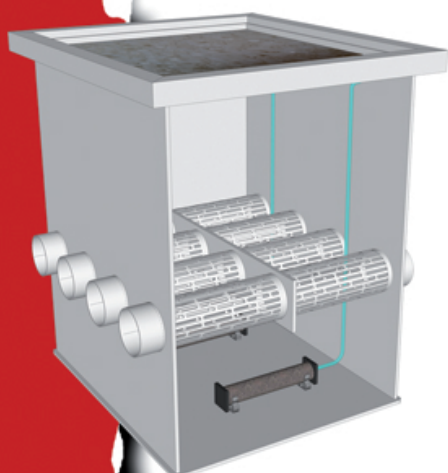
Aquaking Red Label
general specifications
moving bed filters:

- High-quality Polypropylene
- Unique grid tubing
- Includes airtubes
- Biocarrier 955 m²/m³
- Multi language manual
- Includes servicedesk
- 2 year warranty
- Made in the Netherlands



MOVING BEDFILTER

F2020004

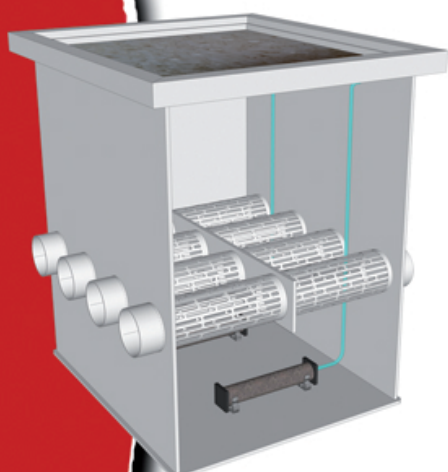


50/55 CONNECTOR

Measurements L x W x H	760 x 850 x 940 mm
Maximum flow	55.000 liter
Maximum pond size	110.000 liter
Inlet	4x 110 mm
Outlet	4x 110 mm
Air tubes	2x 50 x 300 mm
Biocarrier	100 liter

MOVING BEDFILTER

F2020005



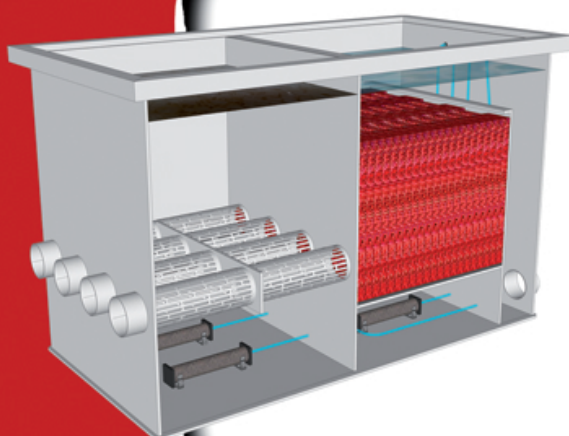
75/100 CONNECTOR

Measurements L x W x H	760 x 850 x 940 mm
Maximum flow	90.000 liter
Maximum pond size	180.000 liter
Inlet	4x 110 mm
Outlet	4x 110 mm
Air tubes	2x 50 x 300 mm
Biocarrier	100 liter

MOVING BEDFILTER

F2020006

F2020007



50/55 & 75/100 BWB & MATTEN

Measurements L x W x H	1620 x 850 x 1010 mm
Maximum flow	90.000 liter
Maximum pond size	180.000 liter
Inlet	4x 110 mm
Outlet	4x 110 mm
Air tubes	2x 50 x 300 mm
Biocarrier	100 liter
Filtermats	RED-X

COMBI FILTERS

The Red Label Combi Filter combines a Drum filter and Moving Bed filter in one, compact filtration unit.

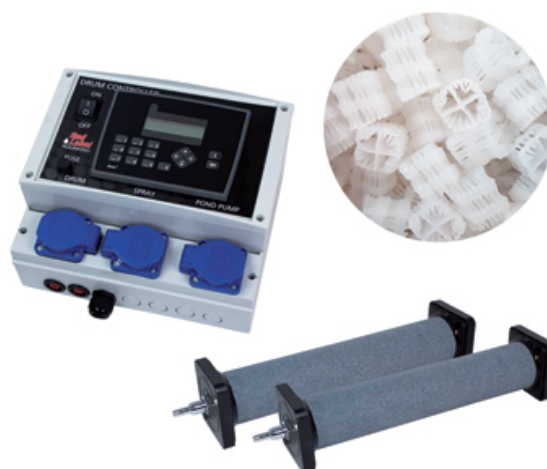
Combining these two systems creates a near perfect biological environment for your pond waters. The two filter systems working in unison create a natural, healthy bacterial culture while degradation of harmful substances is maintained.



Aquaking Red Label
general specifications
Combi filters:

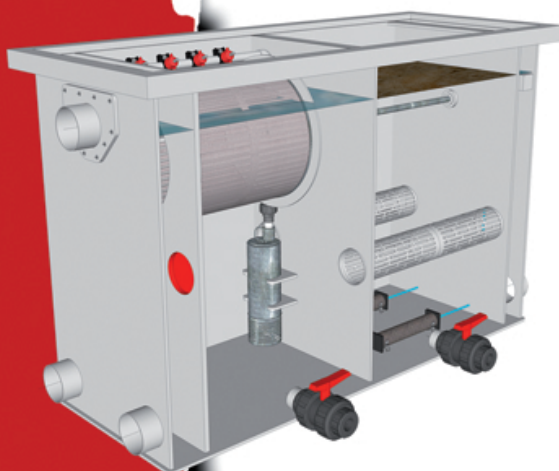
- High quality polypropylene
- Stainless steel panels 70 mu
- Built-in flushpump
- Includes controller box
- Pressure sensor operated
- Adjustable sprayer timing
- Low water level safety
- Unique grid tubing
- Includes airtubes
- Biocarrier 955 m²/m³
- Ball valves 2x 50 mm
- Includes cover
- Cover security
- Multi language manual
- Includes servicedesk
- 2 year warranty
- Made in the Netherlands

After the dirt and grime has been removed from the pond waters in the drum filter section, the water enters the Moving Bed filter which is a biological filter environment. In this filtering phase the pondwater gets in contact with good bacteria that are housed on the Biocarrier. The bacteria break down ammonia into nitrite and nitrite will be converted into 'harmless' nitrates. The Biocarrier is kept in motion by two supplied and fixed in place stone airtubes. These two tubes constantly and rapidly exude air through the stones pores, this results in continuous movement of the Biocarrier and optimizes watercontact.



COMBIFILTER

F2040001

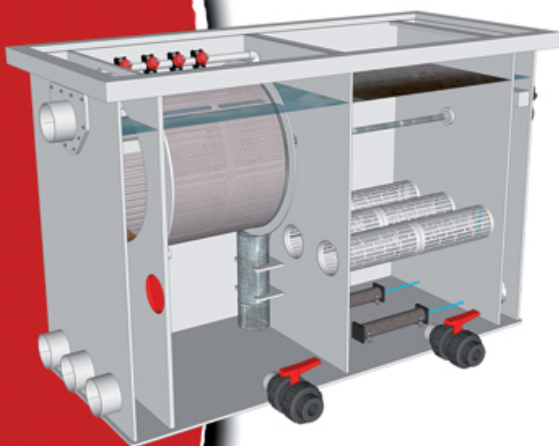


20/25

Measurements L x W x H	1730 x 650 x 1005 mm
Panel size	400 x 400 mm
Maximum flow	25.000 liter
Maximum pond size	50.000 liter
Inlet	2x 110 mm
Outlet	2x 110 mm
Air tubes	2x 50 x 300 mm
Biocarrier	100 liter

COMBIFILTER

F2040002

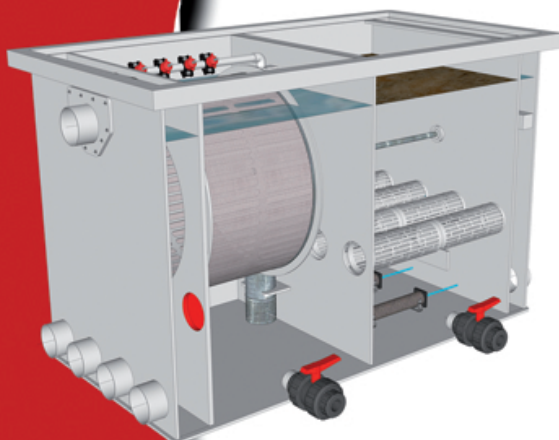


30/35

Measurements L x W x H	1730 x 700 x 1005 mm
Panel size	400 x 500 mm
Maximum flow	35.000 liter
Maximum pond size	70.000 liter
Inlet	3x 110 mm
Outlet	3x 110 mm
Air tubes	2x 50 x 300 mm
Biocarrier	100 liter

COMBIFILTER

F2040003



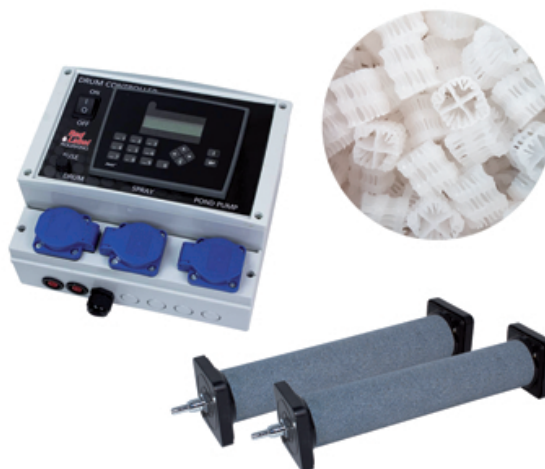
50/55

Measurements L x W x H	1730 x 850 x 1005 mm
Panel size	400 x 650 mm
Maximum flow	55.000 liter
Maximum pond size	110.000 liter
Inlet	4x 110 mm
Outlet	4x 110 mm
Air tubes	2x 50 x 300 mm
Biocarrier	100 liter

COMBIFILTERS XL

The Red Label Combi Filter combines a Drum filter and Moving Bed filter in one, compact filtration unit.

Combining these two systems creates a near perfect biological environment for your pond waters. The two filter systems working in unison create a natural, healthy bacterial culture while degradation of harmful substances is maintained.



Aquaking Red Label
general specifications
Combi filters XL:

- High quality polypropylene
- Stainless steel panels 70 mu
- Built-in flushpump
- Includes controller box
- Pressure sensor operated
- Adjustable sprayer timing
- Low water level safety
- Unique grid tubing
- Includes airtubes
- Biocarrier 955 m²/m³
- Ball valves 2x 50 mm
- Includes cover
- Cover security
- Multi language manual
- Includes servicedesk
- 2 year warranty
- Made in the Netherlands

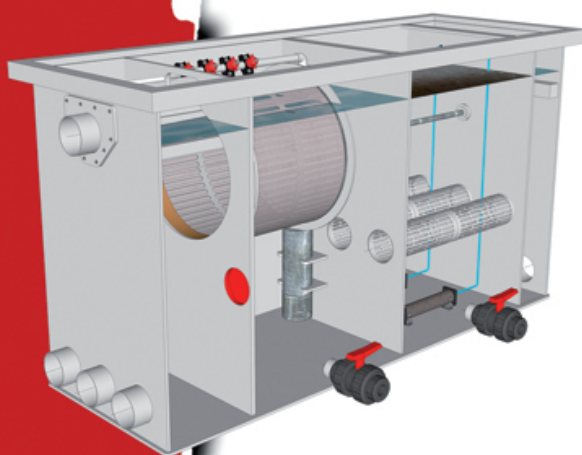
After the dirt and grime has been removed from the pond waters in the drum filter section, the water enters the Moving Bed filter which is a biological filter environment. In this filtering phase the pondwater gets in contact with good bacteria that are housed on the Biocarrier. The bacteria break down ammonia into nitrite and nitrite will be converted into 'harmless' nitrates. The Biocarrier is kept in motion by two supplied and fixed in place stone airtubes. These two tubes constantly and rapidly exude air through the stones pores, this results in continuous movement of the Biocarrier and optimizes watercontact.

The XL version has an extended front chamber that is 300% larger than the regular Combi Filter. This creates a higher flow rate and stable waters within the filter system. The larger chamber room also allows larger, longer UV-C units to be installed. The drainage channel and drum are because of this enlarged chamber easier to access for maintenance.



COMBIFILTER

F2040007

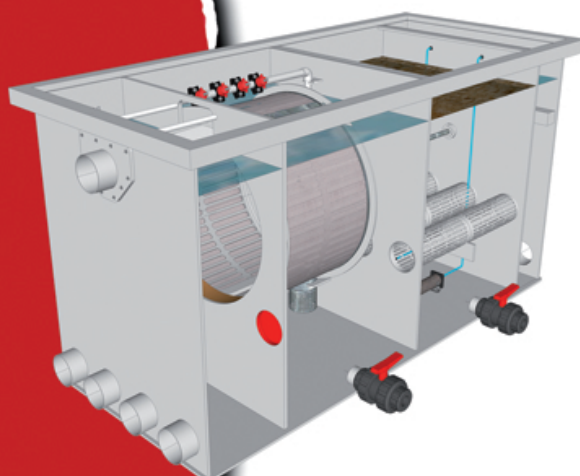


30/35 XL

Measurements L x W x H	2045 X 700 X 1005 mm
Panel size	400 x 500 mm
Maximum flow	35.000 liter
Maximum pond size	70.000 liter
Inlet	3x 110 mm
Outlet	3x 110 mm
Air tubes	2x 50 x 300 mm
Biocarrier	100 liter

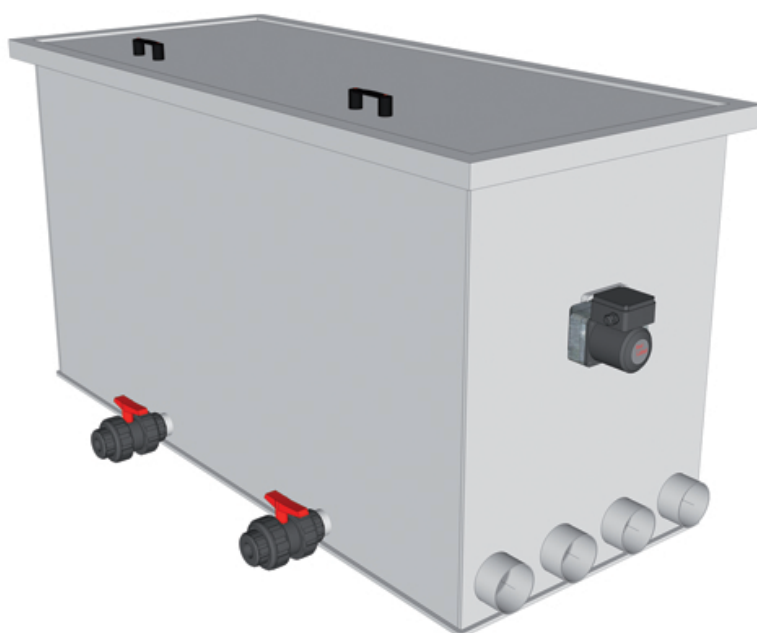
COMBIFILTER

F2040008



50/55 XL

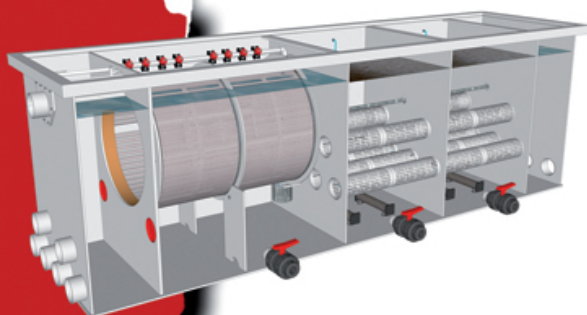
Measurements L x W x H	2045 X 850 X 1005 mm
Panel size	400 x 650 mm
Maximum flow	55.000 liter
Maximum pond size	110.000 liter
Inlet	4x 110 mm
Outlet	4x 110 mm
Air tubes	2x 50 x 300 mm
Biocarrier	100 liter



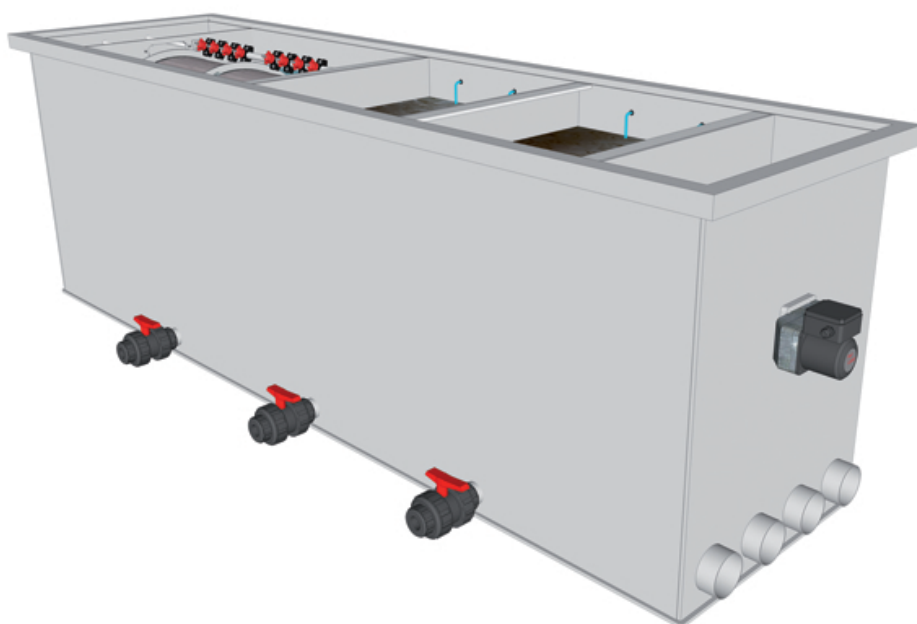
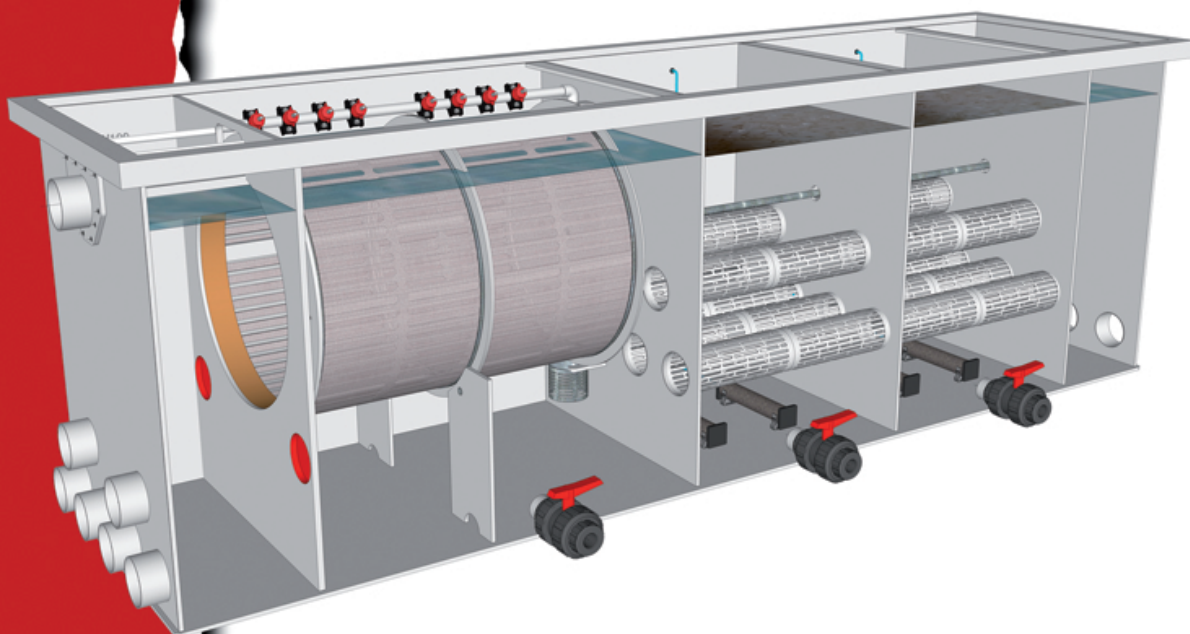
COMBIFILTER

F2040004

75/100 XL



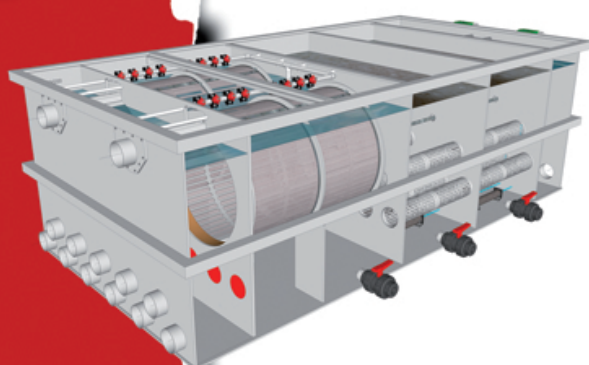
Measurements L x W x H	3235 x 850 x 1005 mm
Panel dimensions	800 x 650 mm
Maximum flowrate	90.000 liter
Maximum pond volume	180.000 liter
Inlet	6x 110 mm
Outlet	4x 110 mm
Airtubes	4x 50 x 300 mm
Biocarrier	200 liter
Ball valves	3x 50 mm



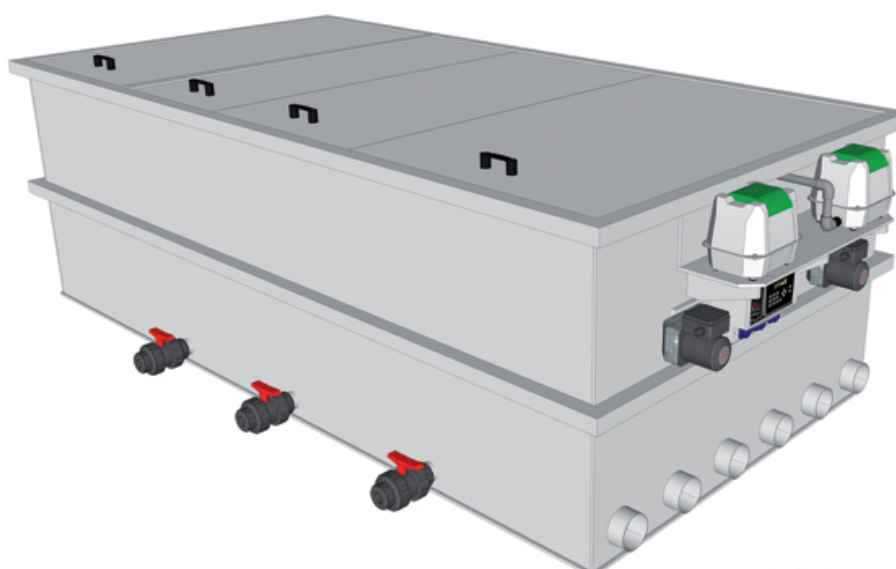
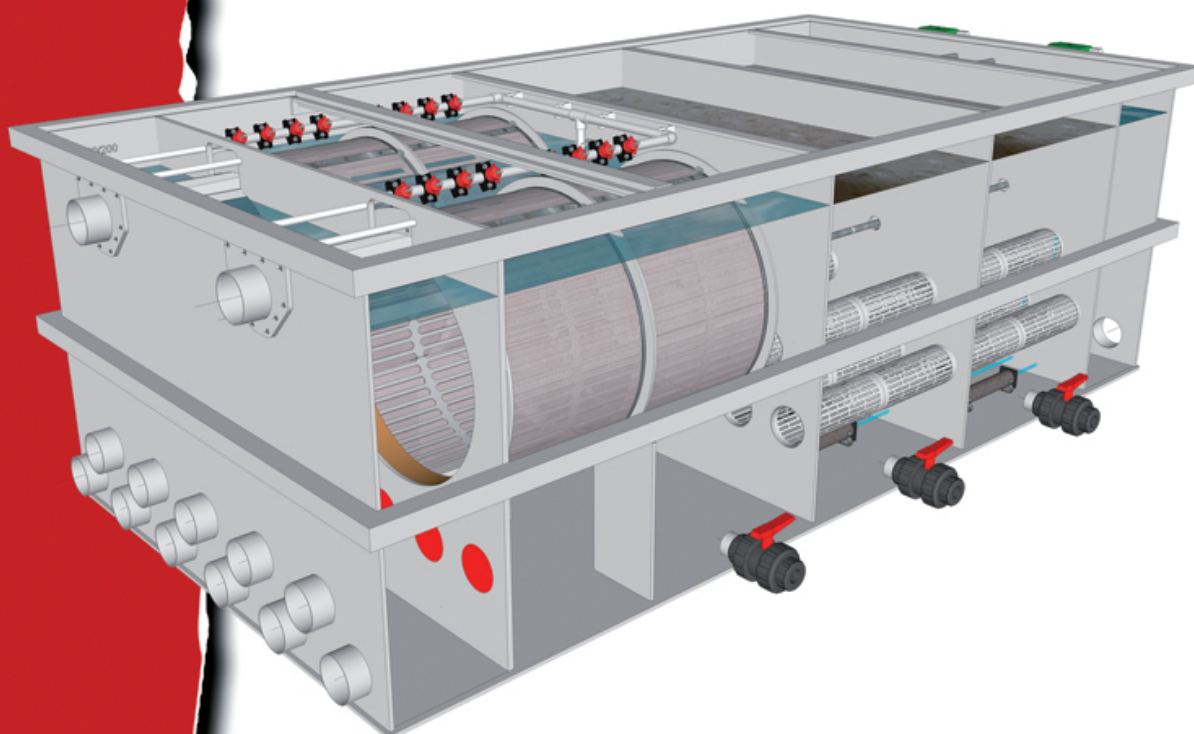
COMBIFILTER

F2040005

100/200 XL



Measurements L x W x H	3280 x 1570 x 1010 mm
Panel size	2x 800 x 650 mm
Maximum flow	180.000 liter
Maximum pond size	360.000 liter
Inlet	11x 110 mm
Outlet	6x 110 mm
Air tubes	8x 50 x 300 mm
Biocarrier	400 liter



DRUM FILTER PLUG & PLAY M

The Red Label Plug & Play provides in the absolute easiest way of installing a filter system on your pond.

Any filtration system for a pond is preferably installed as a gravity set-up in an easily accessible, purposely build pit or filter room. Clearance and enough space is required for additional piping, connecting pieces and pumps. Red Label Plug & Play M systems feature all necessary equipment for a perfect filtration installed in one compacted housing with no extra space required.



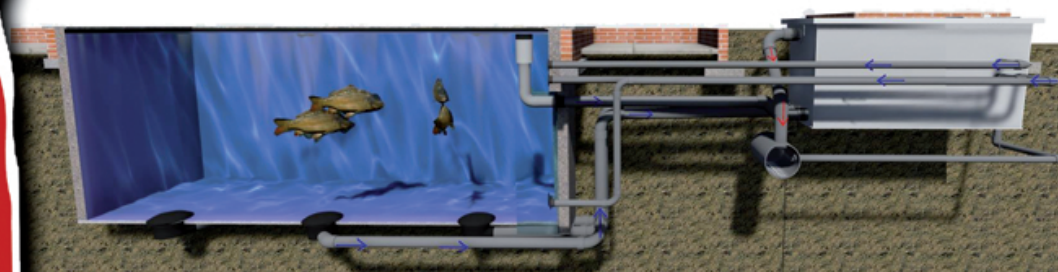
Aquaking Red Label general specifications Plug & PLayer M:

- High quality polypropylene
- Stainless steel panels 70 mu
- Built-in flushpump
- Includes controller box
- Pressure sensor operated
- Adjustable sprayer timing
- Low water level safety
- VDL gate valves
- Pipeconx couplings
- ANP 20.000 pumps
- Submersible pump
- Ball valves 63 mm
- Includes cover
- Cover security
- Multi language manual
- Includes servicedesk
- 2 year warranty
- Made in the Netherlands

The pond water flows through the compact entrance chamber that can be controlled by the gate valves. The pond water then passes through into the drum filter chamber where the drum gauze and sprayers discard unwanted filth and grime. Thereafter the pond water is transported to your additional biological filter and is then returned to the pond. All digital controllers are mounted in third and last filter chamber. Flooding of this control room is protected due to the built-in submersible pump. In such an event the pond water is pumped out of the filter automatically.

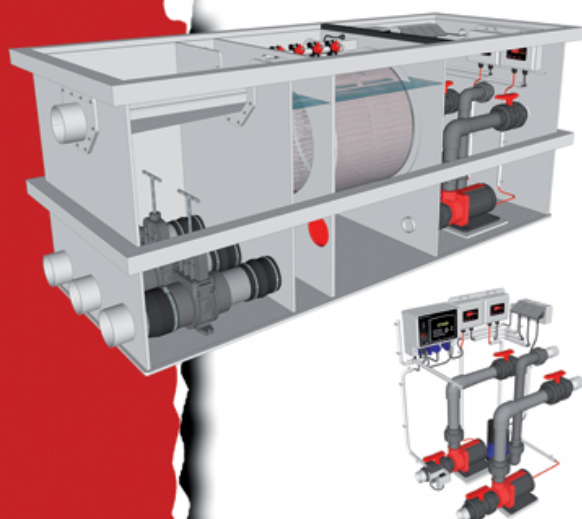
We produce, mount and deliver the Plug & Play systems complete and ready to run. The Plug & Play is fully installed with all the necessary high quality parts and accessories with no additional materials and/or product mounting required. However should one wish to alter or make adjustments to the Plug & Play system, the filter will then be delivered with an empty first and last chamber.

Please consult one of our specialists when making and mounting your own adjustments to a Plug & Play filter system.



DRUMFILTER

F2070001



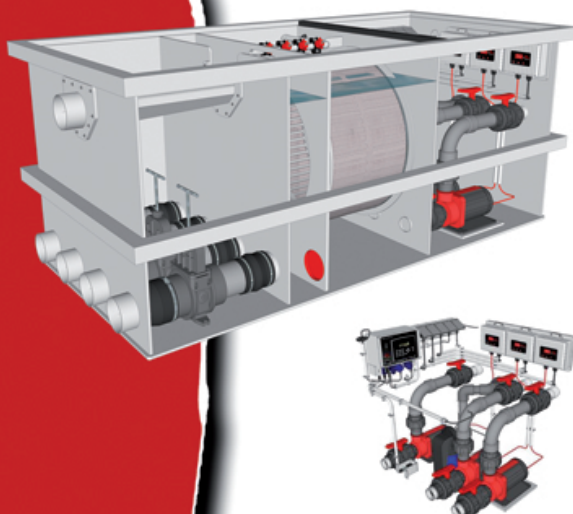
30/35 PLUG & PLAY M

Measurements L x W x H	2025 X 820 X 830 mm
Panel size	400 x 500 mm
Maximum flow	35.000 liter
Maximum pond size	70.000 liter
Inlet	3x 110 mm
Outlet	2x 2" 63 mm

Custom adjustments:	
Ball valves	4x 2" 63 mm
Pond pumps	2x ANP 20.000
Submersible pump	Q500011 internal float
Gate valves	3x VDL 110 mm
Rubber couplings	6x Pipeconx

DRUMFILTER

F2070004



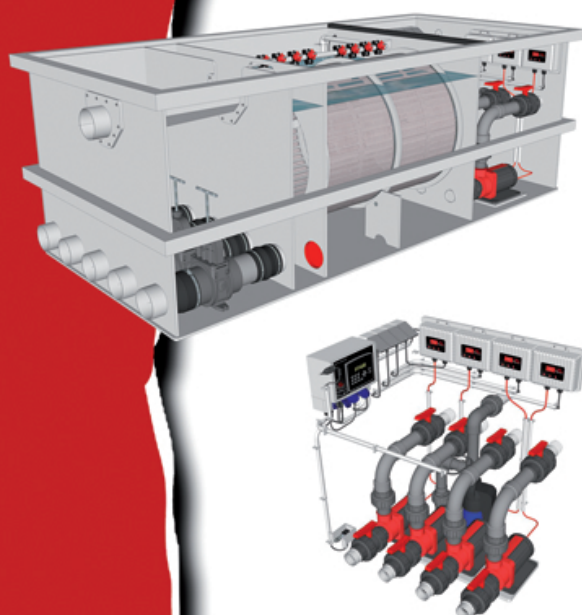
50/55 PLUG & PLAY M

Measurements L x W x H	2025 X 950 X 830 mm
Panel size	400 x 650 mm
Maximum flow	55.000 liter
Maximum pond size	110.000 liter
Inlet	4x 110 mm
Outlet	3x 2" 63 mm

Custom adjustments:	
Ball valves	6x 2" 63 mm
Pond pumps	3x ANP 20.000
Submersible pump	Q500011 internal float
Gate valves	4x VDL 110 mm
Rubber couplings	8x Pipeconx

DRUMFILTER

F2070007



75/100 PLUG & PLAY M

Measurements L x W x H	2435 X 1100 X 830 mm
Panel size	800 x 650 mm
Maximum flow	75.000 liter
Maximum pond size	150.000 liter
Inlet	5x 110 mm
Outlet	3x 2" 63 mm

Custom adjustments:	
Ball valves	8x 2" 63 mm
Pond pumps	4x ANP 20.000
Submersible pump	Q500011 internal float
Gate valves	5x VDL 110 mm
Rubber couplings	10x Pipeconx

COMBI FILTER PLUG & PLAY L

The Red Label Plug & Play provides in the absolute easiest way of installing a filter system on your pond.

Any filtration system for a pond is preferably installed as a gravity set-up in an easily accessible, purposely build pit or filter room. Clearance and enough space is required for additional piping, connecting pieces and pumps. Red Label Plug & Play L systems feature all necessary equipment for a perfect filtration installed in one compacted housing with no extra space required.



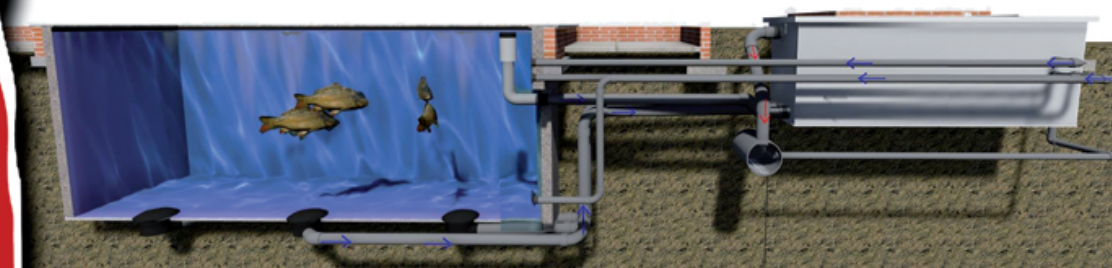
The pond water flows through the compact entrance chamber that can be controlled by the gate valves. The pond water then passes through into the drum filter chamber where the drum gauze and sprayers discard unwanted filth and grime. Thereafter the pond water is transported to the moving bed filter chamber for biological filtration and is then returned to the pond. All digital controllers are mounted in fourth and last filter chamber. Flooding of this control room is protected due to the built-in submersible pump. In such an event the pond water is pumped out of the filter automatically.

We produce, mount and deliver the Plug & Play systems complete and ready to run. The Plug & Play is fully installed with all the necessary high quality parts and accessories with no additional materials and/or product mounting required. However should one wish to alter or make adjustments to the Plug & Play system, the filter will then be delivered with an empty first and last chamber.

Please consult one of our specialists when making and mounting your own adjustments to a Plug & Play filter system.

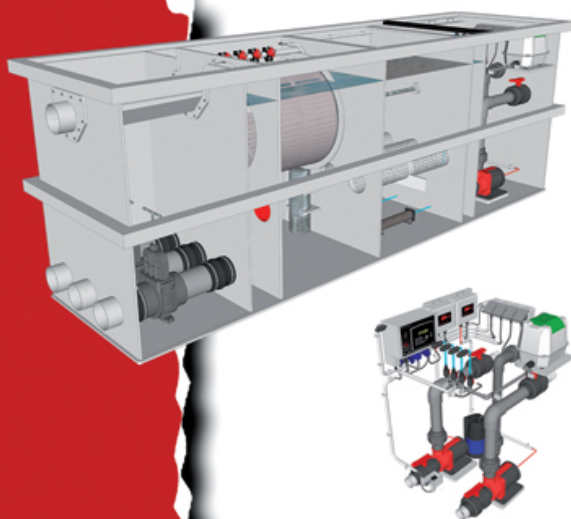
Aquaking Red Label general specifications Plug & PPlay L:

- High quality polypropylene
- Stainless steel panels 70 mu
- Built-in flushpump
- Includes controller box
- Pressure sensor operated
- Adjustable sprayer timing
- Low water level safety
- VDL gate valves
- Pipeconx couplings
- Unique grid tubing
- Includes airtubes
- Biocarrier 955 m²/m³
- ANP 20.000 pumps
- Submersible pump
- Ball valves 63 mm
- Includes cover
- Cover security
- Multi language manual
- Includes servicedesk
- 2 year warranty
- Made in the Netherlands



COMBIFILTER

F2070002



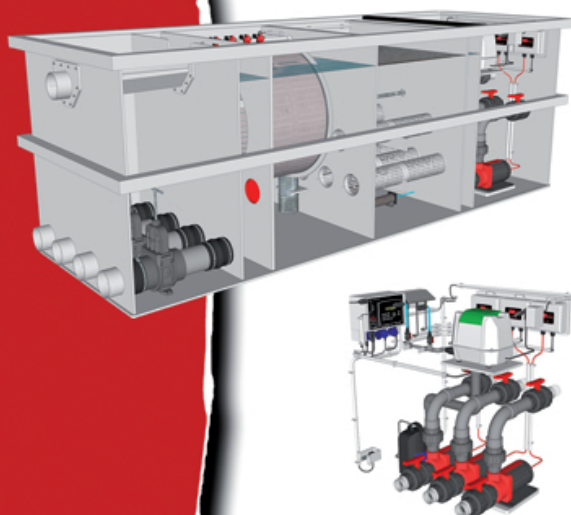
30/35 PLUG & PLAY L

Measurements L x W x H	2890 X 800 X 1005 mm
Panel size	400 x 500 mm
Maximum flow	35.000 liter
Maximum pond size	70.000 liter
Inlet	3x 110 mm
Outlet	2x 2" 63 mm
Air tubes	2x 50 x 300 mm
Biocarrier	100 liter

Custom adjustments:	
Ball valves	4x 2" 63 mm
Pond pumps	2x ANP 20.000
Submersible pump	Q500011 internal float
Air pump	Secoh JDK-S50
Gate valves	3x VDL 110 mm
Rubber couplings	6x Pipeconx

COMBIFILTER

F2070005



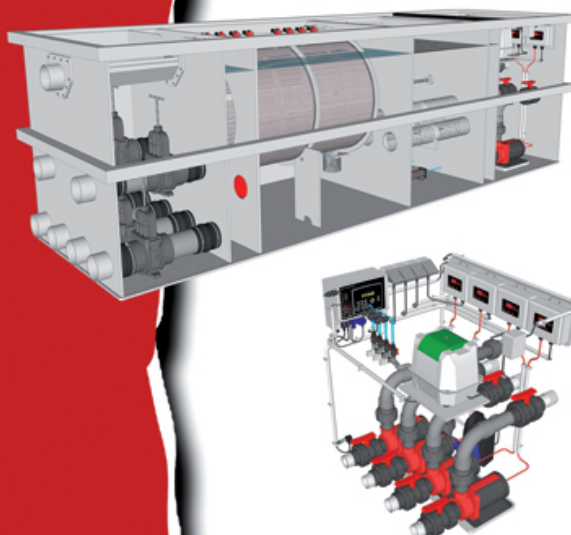
50/55 PLUG & PLAY L

Measurements L x W x H	2890 X 1000 X 1005 mm
Panel size	400 x 650 mm
Maximum flow	55.000 liter
Maximum pond size	110.000 liter
Inlet	4x 110 mm
Outlet	3x 2" 63 mm
Air tubes	2x 50 x 300 mm
Biocarrier	100 liter

Custom adjustments:	
Ball valves	6x 2" 63 mm
Pond pumps	3x ANP 20.000
Submersible pump	Q500011 internal float
Air pump	Secoh JDK-S50
Gate valves	4x VDL 110 mm
Rubber couplings	8x Pipeconx

COMBIFILTER

F2070008



75/100 PLUG & PLAY L

Measurements L x W x H	3285 X 1000 X 1005 mm
Panel size	800 x 650 mm
Maximum flow	90.000 liter
Maximum pond size	180.000 liter
Inlet	6x 110 mm
Outlet	3x 2" 63 mm
Air tubes	2x 50 x 300 mm
Biocarrier	100 liter

Custom adjustments:	
Ball valves	8x 2" 63 mm
Pond pumps	4x ANP 20.000
Submersible pump	Q500011 internal float
Air pump	Secoh JDK-S50
Gate valves	6x VDL 110 mm
Rubber couplings	12x Pipeconx

COMBI FILTER PLUG & PLAY XL

The Red Label Plug & Play provides in the absolute easiest way of installing a filter system on your pond.

Any filtration system for a pond is preferably installed as a gravity set-up in an easily accessible, purposely build pit or filter room. Clearance and enough space is required for additional piping, connecting pieces and pumps. Red Label Plug & Play XL systems feature all necessary equipment for a perfect filtration installed in one compacted housing with no extra space required.



The pond water flows through the compact entrance chamber that can be controlled by the gate valves. The pond water then passes through into the drum filter chamber where the drum gauze and sprayers discard unwanted filth and grime. Thereafter the pond water is transported to the moving bed filter chamber for biological filtration. The Plug & Play XL has an added chamber with Red-X filter mats. These high quality matting provide an extra biological filtration before the water is returned to the pond.

All digital controllers are mounted in fifth and last filter chamber. Flooding of this control room is protected due to the built-in submersible pump. In such an event the pond water is pumped out of the filter automatically.

We produce, mount and deliver the Plug & Play systems complete and ready to run. The Plug & Play is fully installed with all the necessary high quality parts and accessories with no additional materials and/or product mounting required. However should one wish to alter or make adjustments to the Plug & Play system, the filter will then be delivered with an empty first and last chamber.

Please consult one of our specialists when making and mounting your own adjustments to a Plug & Play filter system.

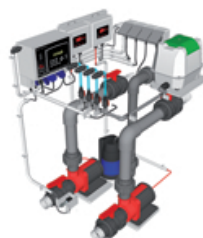
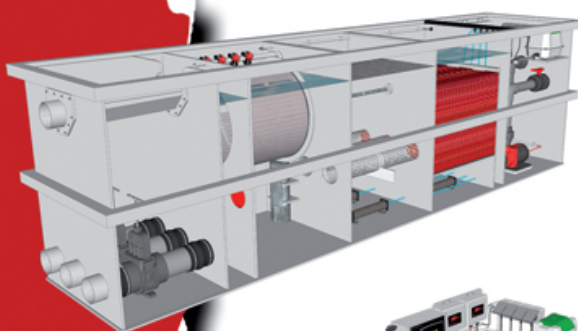
Aquaking Red Label general specifications Plug & PPlay XL:

- High quality polypropylene
- Stainless steel panels 70 mu
- Built-in flushpump
- Includes controller box
- Pressure sensor operated
- Adjustable sprayer timing
- Low water level safety
- VDL gate valves
- Pipeconx couplings
- Unique grid tubing
- Includes airtubes
- Biocarrier 955 m²/m³
- RED-X filter mats
- ANP 20.000 pumps
- Submersible pump
- Ball valves 63 mm
- Includes cover
- Cover security
- Multi language manual
- Includes servicedesk
- 2 year warranty
- Made in the Netherlands



COMBIFILTER

F2070003



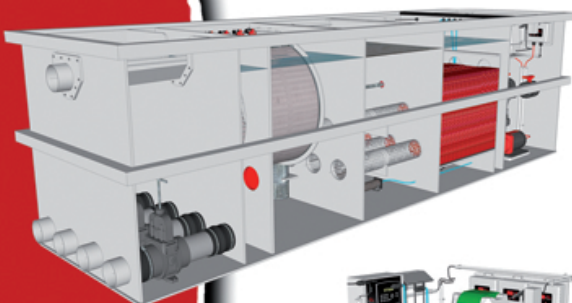
30/35 PLUG & PLAY XL

Measurements L x W x H	3500 X 800 X 1005 mm
Panel size	400 x 500 mm
Maximum flow	35.000 liter
Maximum pond size	70.000 liter
Inleşt	3x 110 mm
Outlet	2x 2" 63 mm
Air tubes	4x 50 x 300 mm
Biocarrier	100 liter
Filtermats	RED-X

Custom adjustments:	
Ball valves	4x 2" 63 mm
Pond pumps	2x ANP 20.000
Submersible pump	Q500011 internal float
Air pump	Secoh JDK-S100
Gate valve	3x VDL 110 mm
Rubber couplings	6x Pipeconx

COMBIFILTER

F2070006



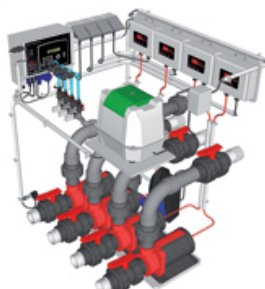
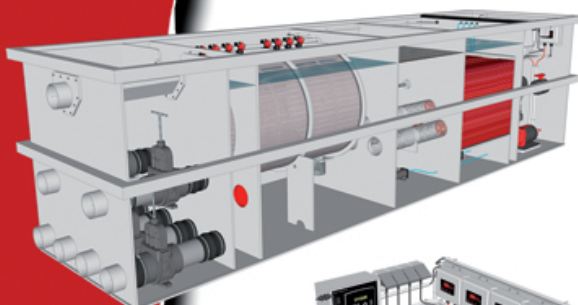
50/55 PLUG & PLAY XL

Measurements L x W x H	3500 X 1000 X 1005 mm
Panel size	400 x 650 mm
Maximum flow	55.000 liter
Maximum pond size	110.000 liter
Inlet	4x 110 mm
Outlet	3x 2" 63 mm
Air tubes	4x 50 x 300 mm
Biocarrier	100 liter
Filtermats	RED-X

Custom adjustments:	
Ball valves	6x 2" 63 mm
Pond pumps	3x ANP 20.000
Submersible pump	Q500011 internal float
Air pump	Secoh JDK-S100
Gate valves	4x VDL 110 mm
Rubber couplings	8x Pipeconx

COMBIFILTER

F2070009



75/100 PLUG & PLAY XL

Measurements L x W x H	3895 X 1000 X 1005 mm
Panel size	800 x 650 mm
Maximum flow	90.000 liter
Maximum pond size	180.000 liter
Inlet	6x 110 mm
Outlet	3x 2" 63 mm
Air tubes	4x 50 x 300 mm
Biocarrier	100 liter
Filtermats	RED-X

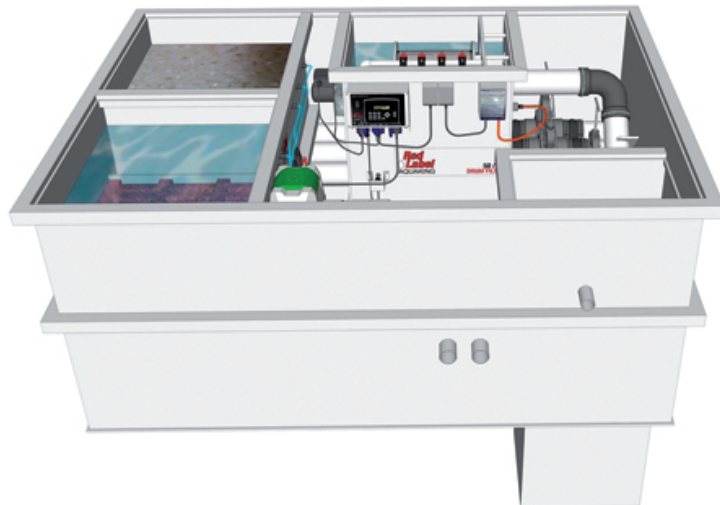
Custom adjustments:	
Ball valves	8x 2" 63 mm
Pond pumps	4x ANP 20.000
Submersible pump	Q500011 internal float
Air pump	Secoh JDK-S100
Gate valves	6x VDL 110 mm
Rubber couplings	12x Pipeconx

Aquaking Red Label
general specifications
Plug & Play PIT:

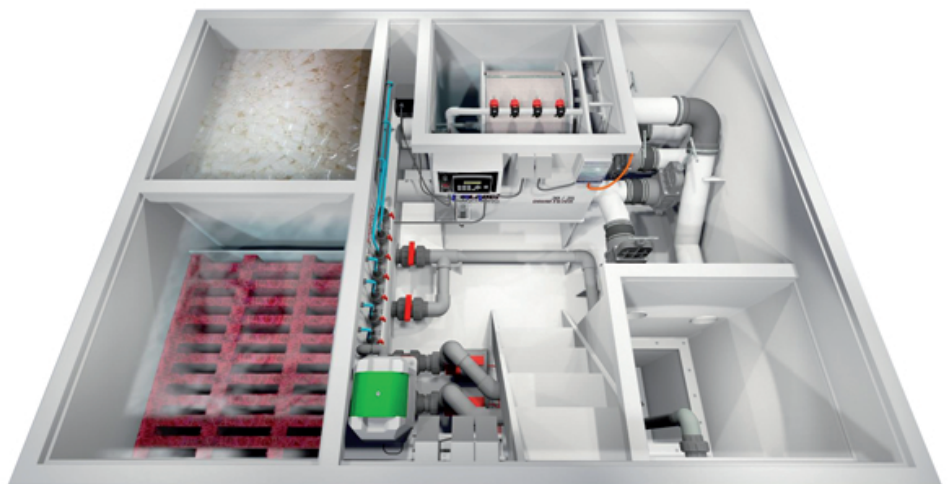
- High quality polypropylene
- Stainless steel panels 70 mu
- Built-in flushpump
- Includes controller box
- Pressure sensor operated
- Adjustable sprayer timing
- Low water level safety
- VDL gate valves
- Pipeconx couplings
- Unique grid tubing
- Includes airtubes
- Biocarrier 955 m²/m³
- RED-X filter mats
- ANP 20.000 pumps
- Submersible pump
- Ball valves 63 mm
- Includes cover
- Cover security
- Multi language manual
- Includes servicedesk
- 2 year warranty
- Made in the Netherlands

COMBI FILTER PLUG & PLAY PIT

The absolute total solution to your filtration needs. The Combi Drum, Pit, Plug & Play involves and incorporates every ergonomic solution possible. The models shown are fully equipped with Red Label's top range filters and completed with all the required accessories and products your filter needs to install and run directly after set-up.

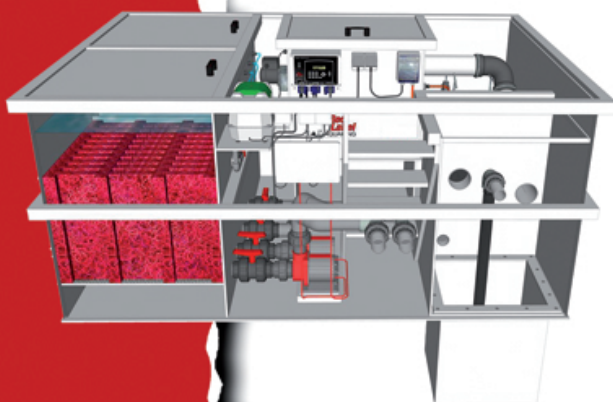


These unique Combi Drum, Pit, Plug & Play filter systems can be custom made. Specific wishes and requirements can be easily adjusted and applied to the installation so that it adheres to your set-up demands.



COMBIFILTER

F2110001



30/35 PLUG & PLAY PIT

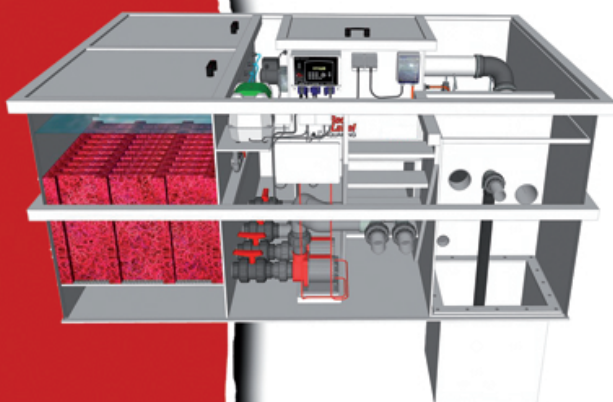
Measurements L x W x H	2350 x 1760 x 1030 mm
Panel size	400 x 500 mm
Maximum flow	35.000 liter
Maximum pond size	70.000 liter
Inlet	3x 110 mm
Outlet	2x 2" 63 mm
Air tubes	4x 50 x 300 mm
Biocarrier	100 liter
Filtermats	RED-X

Custom adjustments:

Ball valves	4x 2" 63 mm
Pond pumps	2x ANP 20.000
Submersible pump	Q500011 internal float
Air pump	Secoh JDK-S100
Gate valves	4x VDL 110 mm
Rubber couplings	9x Pipeconx

COMBIFILTER

F2110002

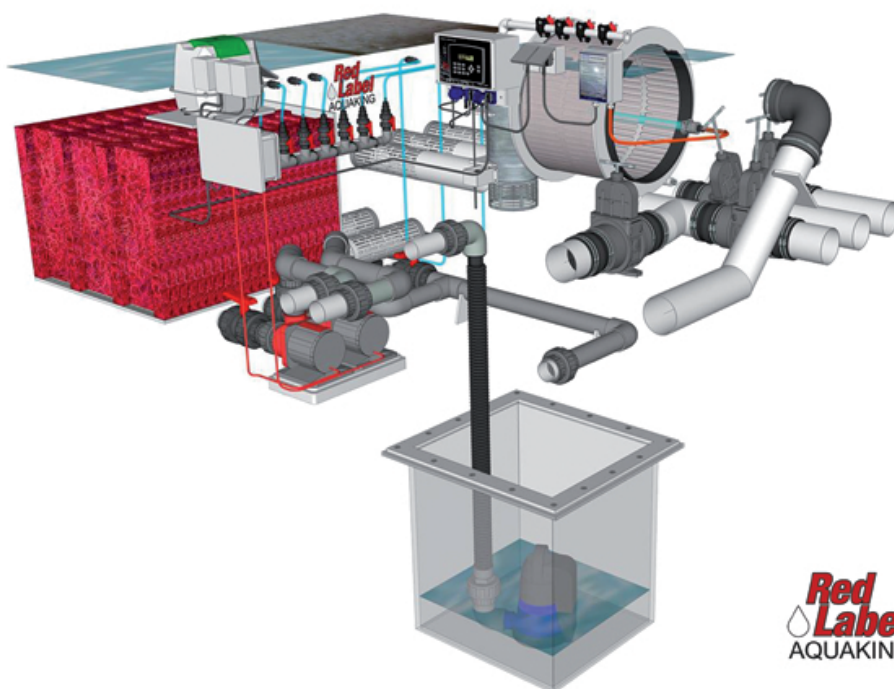


50/55 PLUG & PLAY PIT

Measurements L x W x H	2900 x 1900 x 1010 mm
Panel size	400 x 650 mm
Maximum flow	55.000 liter
Maximum pond size	110.000 liter
Inlet	4x 110 mm
Outlet	3x 2" 63 mm
Air tubes	4x 50 x 300 mm
Biocarrier	100 liter
Filtermats	RED-X

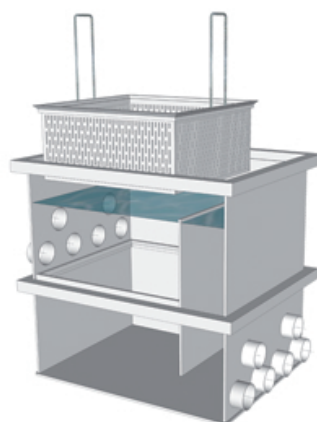
Custom adjustments:

Ball valves	6x 2" 63 mm
Pond pumps	3x ANP 20.000
Submersible pump	Q500011 internal float
Air pump	Secoh JDK-S100
Gate valves	5x VDL 110 mm
Rubber couplings	11x Pipeconx

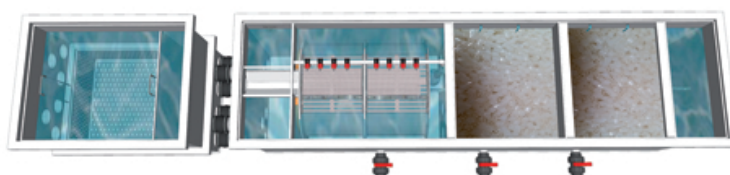


LEAF COLLECTOR FILTERS

Drum filters remove almost all harmful substances and water pollution from your pond waters but can easily clog when it comes to larger objects such as tree leaves, twigs and even thread-algae. The Leaf Collector filter is ideal for removing the larger waste items from the pond waters before it enters the remaining filter system.

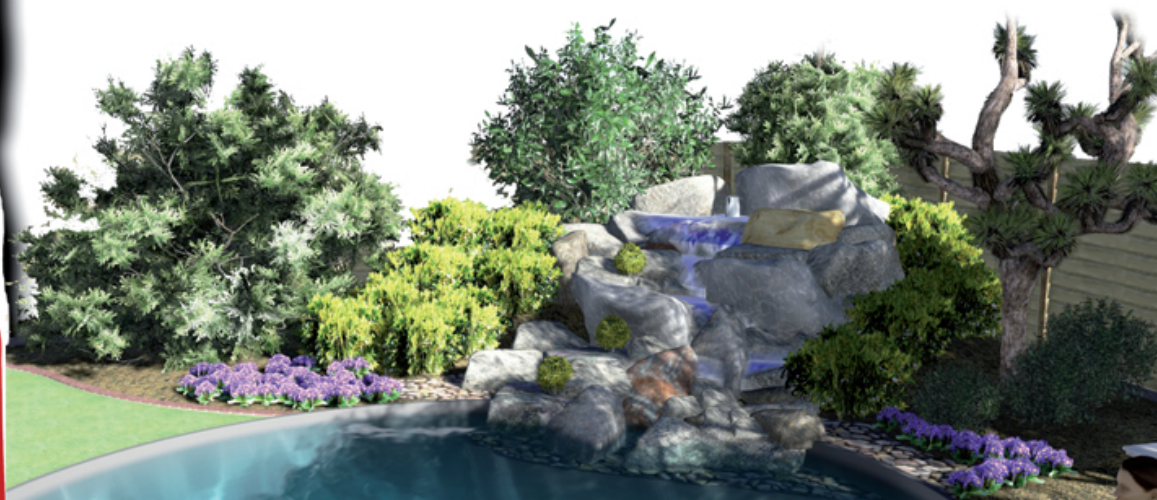


For Ponds that are surrounded by larger deciduous plants and trees, the amount of debris that falls into the pond waters can be often large quantities. This hinders the filtration system and get cause blockages. The Red Label Leaf Collector has been especially developed for these situations.



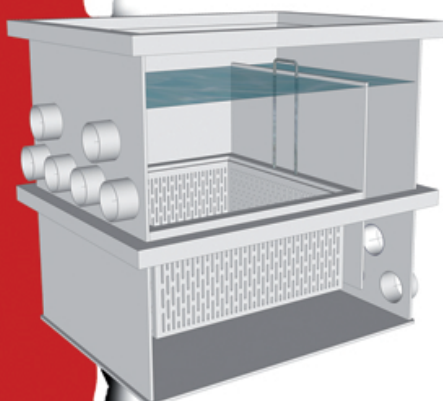
Aquaking Red Label
algemene specificaties
leaf collector filters:

- High quality polypropylene
- Multi language manual
- Includes servicedesk
- 2 year warranty
- Made in the Netherlands



LEAF COLLECTOR

F2080002

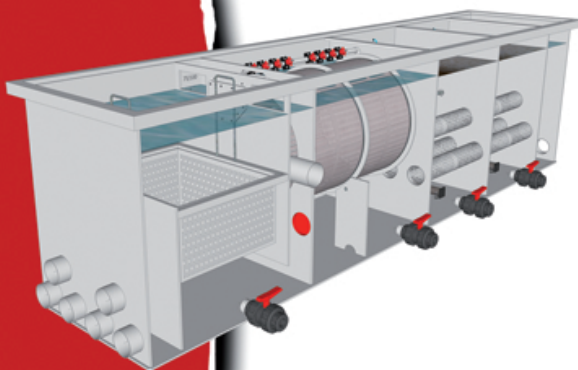


75/100

Measurements L x W x H	1100 X 846 X 1005 mm
Maximum flow	90.000 liter
Maximum pond size	180.000 liter
Inlet	6x 110 mm
Outlet	6x 110 mm

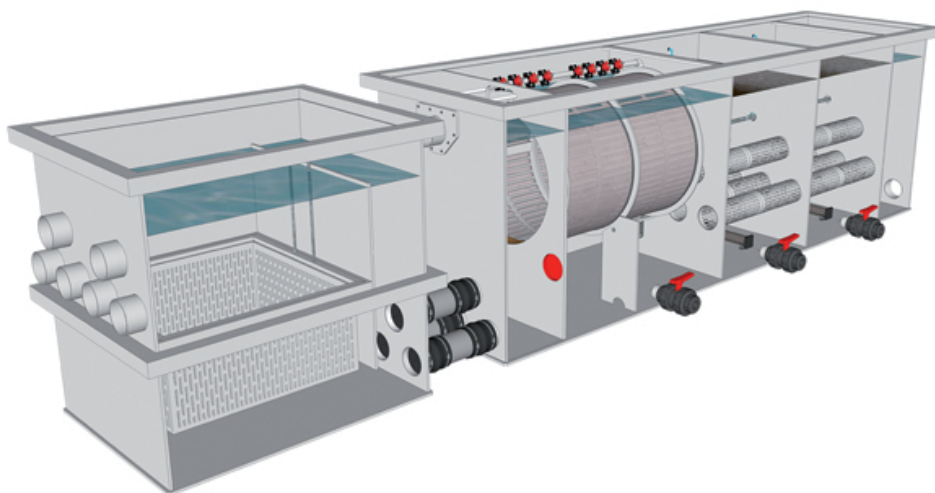
COMBIFILTER

F2080004



75/100 LEAF COLLECTOR

Measurements L x W x H	3860 x 850 x 1005 mm
Panel size	800 x 650 mm
Maximum flow	90.000 liter
Maximum pond size	180.000 liter
Inlet	6x 110 mm
Outlet	4x 2" 63 mm
Air tubes	4x 50 x 300 mm
Biocarrier	200 liter



BASIC 2 FILTERS

The Red Label Drum Filter Basic 2 is a high quality filter with the lowest possible price. The Basic 2 features a number of unique extras that are standard inclusions. The Basic 2 includes of course the drum cylinder with 70 micron gauze, a built-in flushing pump and UV-C unit for example. Due to the built-in flushing pump, there is a great deal in noise reduction during operation. The UV-C unit has a 40 watt amalgam lamp which provides crystal clear water while destroying virtually all algae, fungi and harmful bacteria.

Having these standard features built-in, the filter is able to handle a high flow rate with clear pipes throughout the system.

The Red Label Basic 2 is designed to filter ponds with a volume of up to 40m³, which is nothing short of amazing.



Aquaking Red Label
general specifications
Basicfilters:

- High quality polypropylene
- Stainless steel panels 70 mu
- Built-in flush pump
- Includes controller box
- 40 Watt amalgam UVC
- Includes filtercover
- Multi language manual
- Includes service desk
- 2 year warranty
- Made in the Netherlands

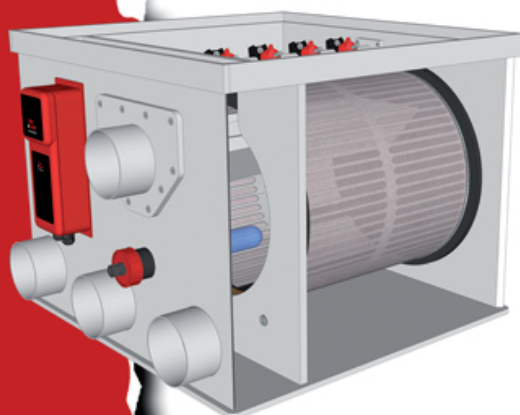
While a drum filter provides an excellent mechanical filtration, removing harmful and unwanted substances from the pond waters, it cannot however provide a biological filtration. To tackle this Red Label has expanded on the Basic 2 to include the Combi Filter Basic 2. With the Combi Basic 2 a Moving Bed chamber has been added, while keeping the unit compact. The moving bed chamber provides a biological filtration and is supplied with 50 litres Biocarrier and airtubes.

Both Drum Filter and Combi Filter 2 are available for Gravity and Pump fed installation set-ups.



DRUMFILTER

F2010002

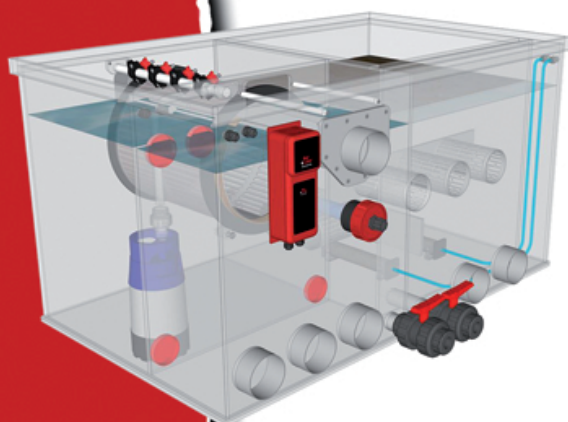


20/25 BASIC 2

Measurements L x W x H	675 X 815 X 530 mm
Panel dimensions	400 x 400 mm
Maximum flowrate	25.000 litres
Maximum pond volume	40.000 litres
Inlet	3x 110 mm
Outlet	2x 110 mm
Built-in flush pump	Q800103
Built-in UVC unit	40 Watt amalgam

COMBIFILTER

F2010004



20/25 BASIC 2

Measurements L x W x H	1400 x 895 x 750 mm
Panel dimensions	400 x 400 mm
Maximum flowrate	25.000 litres
Maximum pond volume	40.000 litres
Inlet	3x 110 mm
Outlet	2x 110 mm
Built-in flush pump	Q800103
Built-in UVC unit	40 Watt amalgam
Airtubes	2x 50 x 300 mm
Ball valves	2x 50 mm
Biocarrier	50 litres



CHAMBER FILTERS

All our Red Label Filters are produced with high-quality polypropylene and only the best materials to attain the best results. This is no different for our Chamber Filters. Each Chamber Filter has 110 mm diameter in- and outlets for optimal water flow and compatibility with a range of various pond pumps. Pump choice is itself an important element in filtration. It is important to consider pond volume and the maximum flow of the filter, in this case a chamber filter.

To allow easy maintenance, each chamber is equipped with a waste outlet and a 50 mm ball valve. The first chamber the pond water passes through is densely filled with filter brushes, providing a mechanical filtration and collecting the unwanted dirt and grime. The water then flows through to the second chamber which is filled with bio-carrier. This second chamber is the Moving Bed chamber which has perforated pipes so the bio-carrier cannot escape into the other chambers. It also features air stones to ensure continuous moving water, allowing healthy bacteria to fester and develop a bacterial colony which is essential for pond water. This also eliminates harmful bacteria which would otherwise pollute the pond waters. Our Red Label Chamber Filters are available with three or four chambers, the larger variation feature two moving bed chambers in the middle.

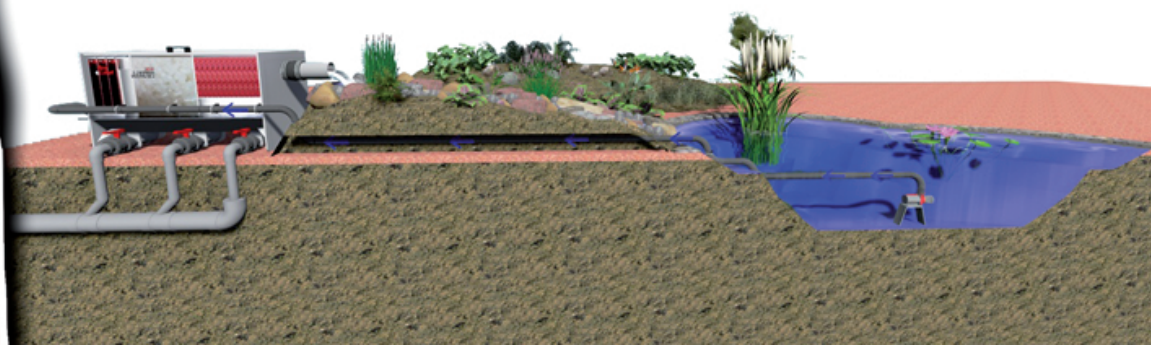


Aquaking Red Label
general specifications
chamber filters:

- High quality polypropylene
- 110mm in- and outlets
- Sansai filter brushes
- RED-X filter mats
- Biocarrier 955 m²/m³
- Includes airtubes
- 50mm ball valves
- 2 year warranty
- Made in the Netherlands

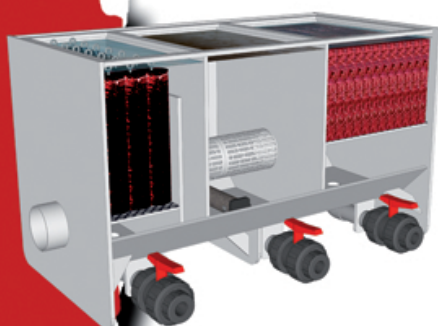
The last chamber on these filters is fitted with Red-X filter mats. These mats also provide a healthy bacterial growth similar to the bio-carrier, the mats are stationary and therefore develop a bio-film that contributes to a healthy nitrogen cycle in the waters. The filter mats are placed in the chamber in cassette form, this open structure prevents blockages, waste removal is boosted and bacterial growth stimulated.

Depending on the installation. Gravity or Pump-fed, the healthy, clear water flows back into the pond and the accumulated waste is washed out through the drain piping. For a difference between the two set-ups, Gravity and Pump-fed, refer to page 59.



3 CHAMBER FILTER

F2050002

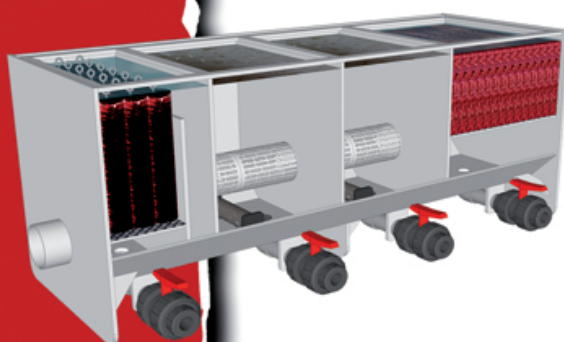


SMALL 9000

Measurements L x W x H	1160 x 520 x 650 mm
Maximum flow	6.500 liter
Maximum pond size	9.000 liter
Inlet	1x 110 mm
Outlet	1x 110 mm
1st chamber	14x Sansai filter brushes
2nd chamber	Biocarrier 1x 30 liter Airtubes 1x 50 x 300 mm
3rd chamber	Red-X filtermats
Inclusive	Cover

4 CHAMBER FILTER

F2050004

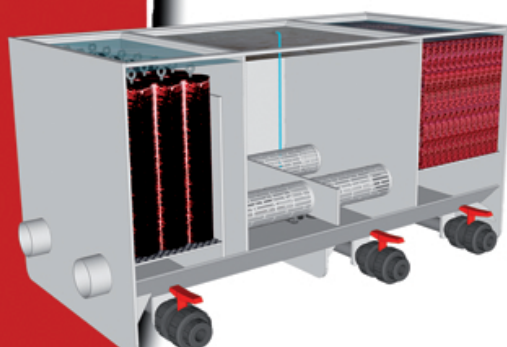


SMALL 12000

Measurements L x W x H	1560 x 520 x 650 mm
Maximum flow	8.500 liter
Maximum pond size	12.000 liter
Inlet	1x 110 mm
Outlet	1x 110 mm
1st chamber	14x Sansai filter brushes
2 & 3rd chamber	Biocarrier 2x 50 liter Airtubes 2x 50 x 300 mm
4th chamber	Red-X filtermats
Inclusive	Cover

3 CHAMBER FILTER

F2050001

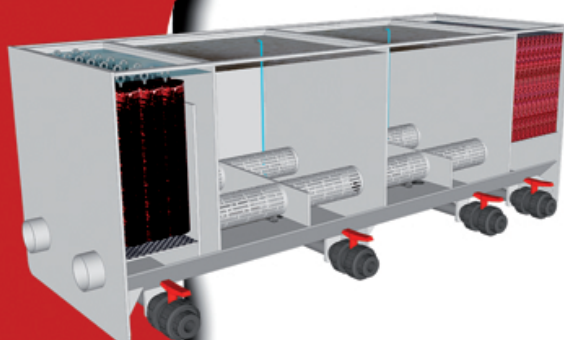


BIG 20000

Measurements L x W x H	1660 x 750 x 790 mm
Maximum flow	20.000 liter
Maximum pond size	20.000 liter
Inlet	2x 110 mm
Outlet	2x 110 mm
1st chamber	16x Sansai filter brushes
2nd chamber	Biocarrier 1x 50 liter Airtubes 1x 50 x 300 mm
3rd chamber	Red-X filtermats
Inclusive	Cover

4 CHAMBER FILTER

F2050003



BIG 25000

Measurements L x W x H	2180 x 750 x 750 mm
Maximum flow	20.000 liter
Maximum pond size	25.000 liter
Inlet	2x 110 mm
Outlet	2x 110 mm
1st chamber	21x Sansai filter brushes
2 & 3rd chamber	Biocarrier 2x 50 liter Airtubes 2x 50 x 300 mm
4th chamber	Red-X filtermats
Inclusive	Cover

TRICKLE FILTERS

Red Label Trickle Filters are built up of separate units to form a tower filter system or drip system. The filter units can be filled with almost any desired filter material and offer the best biological filtering results of all known filters, especially for koi ponds.



Because of the unique tower structure a high oxygen boost is created which cannot be equaled by other filter systems. Harmful substances are efficiently and quickly broken down.

Pond water is returned to the pond via a waterfall opening or optional piping outlets.

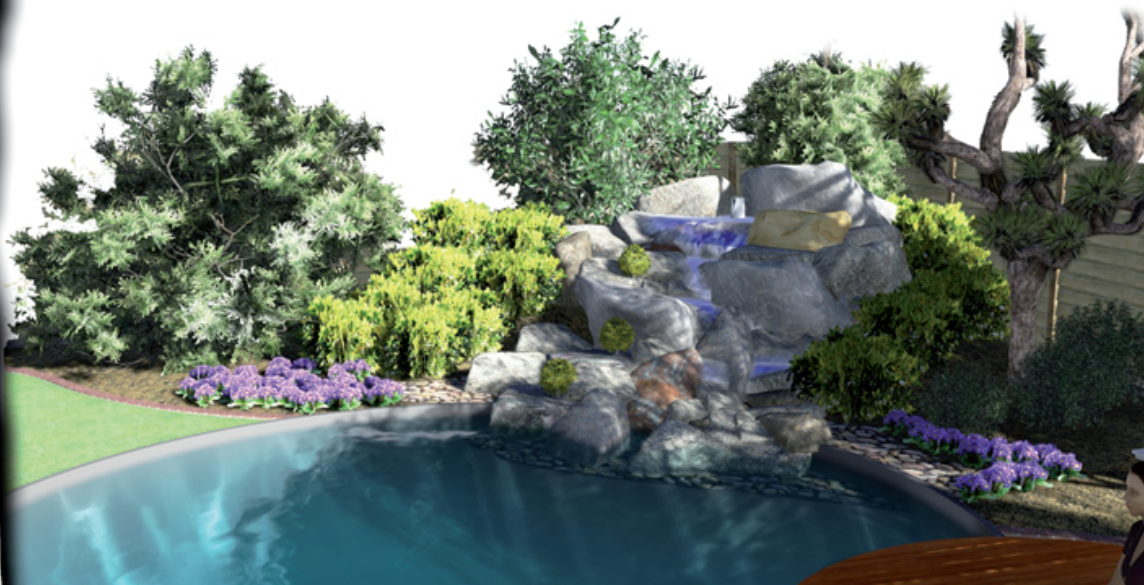
To facilitate the trickle filters in combination with our Red Label filter range, we have developed a unique amalgamation in the Combi-trickle Big filter.

This Combi-trickle Big is designed to fit on a Red Label Combi Filter 30/35 or 50/55 creating an ultimate filtration system.

Thanks to our custom made possibilities, we can optimise and deliver any desired water exhausts that you wish for on your Trickle filter.

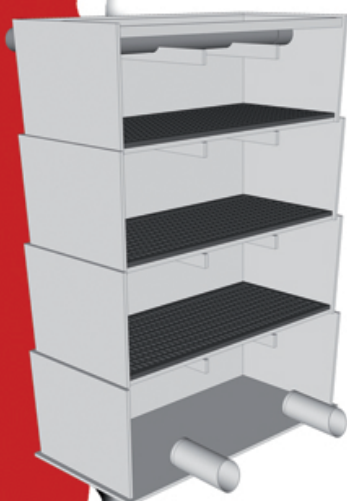
Aquaking Red Label general specifications Trickle filters:

- High quality polypropylene
- Reinforced bottom grids
- Expandable units
- Includes filtercover
- 2 year warranty
- Made in the Netherlands



TRICKLE FILTER

F2060001
F2060002



SMALL

Measurements L x W x H

665 x 320 x 942 mm

Maximum flow

15.000 liter

Inlet

1 x 1½" 50 mm

Outlet

F2060001 2x 63 mm

F2060002 waterfall



TRICKLE FILTER

F2060003
F2060004



BIG

Measurements L x W x H

1000 x 420 x 1200 mm

Maximum flow

20.000 liter

Inlet

1x 2" 63 mm

Outlet

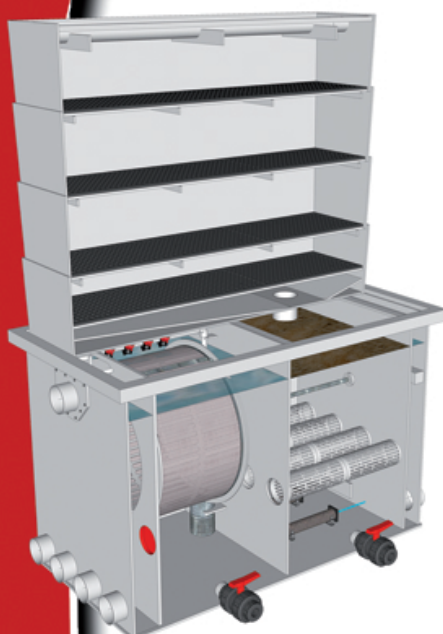
F2060003 3x 110 mm

F2060004 waterfall



TRICKLE FILTER

F2060006



BIG COMBI

Measurements L x W x H

1473 x 374 x 1200 mm

Maximum flow

30.000 liter

Inlet

1x 2" 63 mm

Outlet

1x 110 mm

Info

for Combifilter 30/35 & 50/55

Note:

When purchasing this separate trickle filter we exchange the existing cover of your Combifilter 30/35 or 50/55 against new matching covers for free..

1x transparent cover for the drum filter room
and 1x closed cover for the moving bed filter.

PROTEIN SKIMMER

The Red Label Protein Skimmer is a side filter that combines the biological effects a trickle filter creates with that of a mechanical filtration system. The pond water runs through the Biocarrier to the bottom where air is added. The Biocarrier forms a bio film that provides in a certain degree of biological filtration similar to a trickle filter.

Foam is formed at the bottom of the filter, which is then drained out of the skimmer. The foam carries and removes harmful and unwanted substances from the pond waters.

The foam is created by proteins that are found in koi feed. The Protein Skimmer ensures that the surplus of proteins are removed. Other harmful substances such as acids, ammonia, phosphates, metals and dyes are also removed along with the excess proteins. This Protein Skimmer provides and ensures that your pond water is clean, clear, foam-free and healthy.



BOTTOM DRAINS

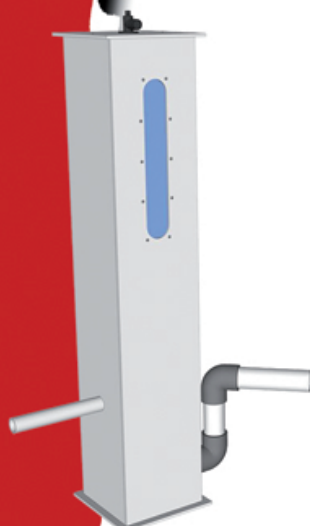
Bottom drains are fairly common in garden ponds and perform to expectations most of the time. These of course should not be used for swimming pools or swimming ponds. One can easily get hurt by standing on this kind of drain. Most bottom drains all feature a similar design; a drainage chute with lid that has a low, dome shape. It is however not uncommon for these bottom drains to become loose after time and use Reconnecting them can be often a bit of a struggle. A loose bottom drain can also be hazardous for koi and pond life.

To tackle these issues Red Label has developed a new type of bottom drain. These drains have a large diameter to attract and drain dirt and grime effectively. Special for koi ponds the Red Label collection features an aerated design that have the most efficient waste transportation to the filtration system.



PROTEIN SKIMMER

F2080008



BIG

Measurements L x W x H	665 x 320 x 942 mm
Maximum flow	6.500 liter
Inlet	1 x 1" 320 mm
Outlet	1x 50 mm

BOTTOM DRAIN

O120051

O120052



LARGE

Diameter	400 mm
Maximum flow	20.000 liter
Outlet	1x 110 mm

Info	O120051 non aerated O120052 aerated
------	--

BOTTOM DRAIN

O120053

O120054



EXTRA LARGE

Diameter	600 mm
Maximum flow	30.000 liter
Outlet	1x 160 mm

Info	O120053 non aerated O120054 aerated
------	--

ANP POND PUMPS

AquaKing Red Label has the right pond pump for any situation. The most put to use pump is the Red Label Amphibious Naked Pump (ANP). This pump is mostly used in Gravity filter installations where the ANP pumps water back into the pond.

The ANP can be used in both wet and dry set-ups, so submersed in water or dry but under waterlevel. It is not just our pump of choice for the Red Label filter series but is also a champion pick for almost any conceivable installation.

The ANP pump includes an electronic Controller Box which you can use to adjust the pump's capacity. This is an excellent feature that is ideal for the colder months, the capacity can be lowered to accommodate the water flow during the winter.

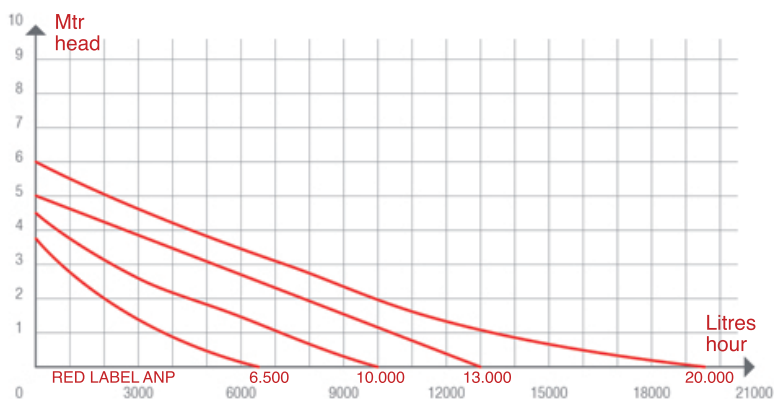


The Red Label pond pumps are extremely energy efficient and are for their price range, at the top of the list for economical usage. The pumps are easy to use, safe, have a high flow rate and a long lifespan with proper use and maintenance.

All Red Label pond pumps include the Controller Box and diverse couplings for easy connection.

Aquaking Red Label general specifications ANP pumps:

- Energy efficient
- Safe operating
- Simple usage
- Adjustable capacity
- High flowrate
- Long lifespan
- Dry or wet set-up
- Includes couplings
- Multi language manual
- 2 year warranty



ANP POND PUMP

W1060039



6500

Max. capacity	6.500 l/h
Consumption	4 - 38 Watt
Pressure	3,8 mwk
Inlet, outlet	1½" 50 mm

ANP POND PUMP

W1060040



10000

Max. capacity	10.000 l/h
Consumption	4 - 78 Watt
Pressure	4,5 mwk
Inlet, outlet	1½" 50 mm

ANP POND PUMP

W1060041



13000

Max. capacity	13.000 l/h
Consumption	4 - 125 Watt
Pressure	5,0 mwk
Inlet, outlet	2" 63 mm

ANP POND PUMP

W1060042



20000

Max. capacity	19.500 l/h
Consumption	4 - 200 Watt
Pressure	6,0 mwk
Inlet, outlet	2" 63 mm

ACP POND PUMPS

AquaKing Red Label has the right pond pump for any situation. The most put to use pump is the Red Label Amphibious Naked Pump (ANP). This pump is mostly used in Gravity filter installations where the ANP pumps water back into the pond.

The ACP pump has a durable and sturdy outer casing that prevents dirt and harmful substances from entering the pump. The ACP is placed in the pond and is often used in pump-fed installations. It is a pump for submersible set-ups only.

The ACP pump includes an electronic Controller Box which you can use to adjust the pump's capacity. This is an excellent feature that is ideal for the colder months, the capacity can be lowered to accommodate the water flow during the winter.

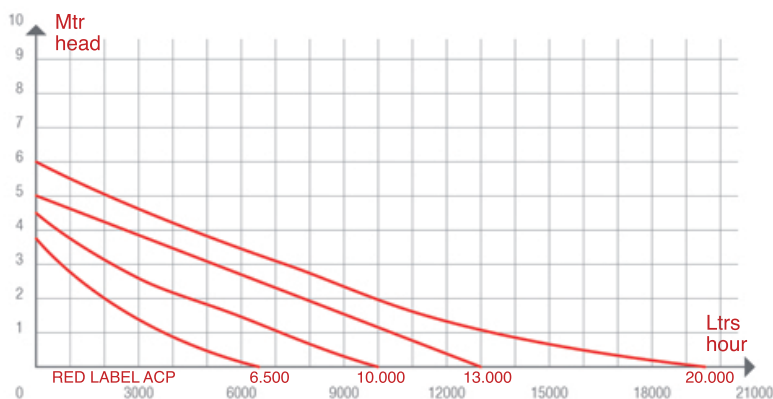


The Red Label pond pumps are extremely energy efficient and are for their price range, at the top of the list for economical usage. The pumps are easy to use, safe, have a high flow rate and a long lifespan with proper use and maintenance.

All Red Label pond pumps include the Controller Box and diverse couplings for easy connection.

Aquaking Red Label general specifications ACP pumps:

- Energy efficient
- Safe operating
- Simple usage
- Adjustable capacity
- High flowrate
- Long lifespan
- Includes couplings
- Multi language manual
- 2 year warranty



ACP POND PUMP

W1060045



6500

Max. capacity	6.500 l/h
Consumption	4 - 38 Watt
Pressure	3,8 mwk
Outlet	Hose connector 1 - 1½ - 1¼"

ACP POND PUMP

W1060046



10000

Max. capacity	10.000 l/h
Consumption	4 - 78 Watt
Pressure	4,5 mwk
Outlet	Hose connector 1 - 1½ - 1¼"

ACP POND PUMP

W1060047



13000

Max. capacity	13.000 l/h
Consumption	4 - 125 Watt
Pressure	5,0 mwk
Outlet	Hose connector 1 - 1½ - 1¼"

ACP POND PUMP

W1060048



20000

Max. capacity	19.500 l/h
Consumption	4 - 200 Watt
Pressure	6,0 mwk
Outlet	Hose connector 1 - 1½ - 1¼"

UVC FILTERS

The AquaKing Red Label JUVVC provides crystal clear waters and is a major contributor to the overall health of your pond life.

The built-in Philips T5 UVC lamp creates UV-C short wave radiation with a peak wave length measured at 253.7nm. This high dosage of radiation ensures that fungi, bacteria and germs are eliminated without the use of harmful chemical substances. The polished, stainless steel interior makes certain that no dirt or grime sticks on the inside of the housing. Also this surface provides extra reflection which outputs 35% more light. The UV-C radiation will destroy any floating algae and reduces chlorine and other chemicals in the water by up to 80%.

The robust housing with straight coupling creates a greater flow and decreases pressure lose. Installation is thanks to the easy couplings simple and allows 360 degrees installation options.



Aquaking Red Label
general specifications
JUVVC filters:

- Energy efficient
- Environmentally friendly
- Safe operating
- Simple usage
- High flowrate
- High light output
- Long lifespan
- Includes couplings
- PHILIPS UVC technology
- Multi language manual
- 2 year warranty
- Made in the Netherlands

UVC built-in unit.

Instead of placing a UVC filter in your piping, it is possible to mount a UVC unit directly in your filter. We recommend the Red Label UVC 40 watt amalgam module. This unit can be installed on virtually any filter system. The included amalgam lamp is more than sufficient for most ponds and is due to the relatively short length, easy to mount.

For larger pond sizes it would be wiser to install two UVC units instead of one larger unit which is often more expensive and less dependable. Two units also allow the ability to have just one running in periods that one unit suffices.



UVC
F1050011



RVS JUVc 40

Measurements	970 x 105 mm
Maximum flow	20.000 liter
Maximum pond size	70.000 liter
UVC	Philips T5 40 Watt
Burning hours	8.000
Maximum pressure	2 bar
Inlet	1x 2" 63 mm
Outlet	1x 2" 63 mm



UVC
F1050012



RVS JUVc 80

Measurements	970 x 105 mm
Maximum flow	20.000 liter
Maximum pond size	70.000 liter
UVC	Philips T5 80 Watt
Burning hours	8.000
Maximum pressure	2 bar
Inlet	1x 2" 63 mm
Outlet	1x 2" 63 mm



UVC
F1050015



BUILT-IN UNIT AMALGAM

Length	480 mm
Built in length	430 mm
Built in opening	2" 63 mm
UVC	40 Watt amalgam
Burning hours	12.000

AIR PUMPS

An air pump must provide, despite the depth of water it is placed in, a constant and continuous amount of backpressure to keep the air flowing. The capacity of an air pump must be equaled to the body of water it has been placed in.

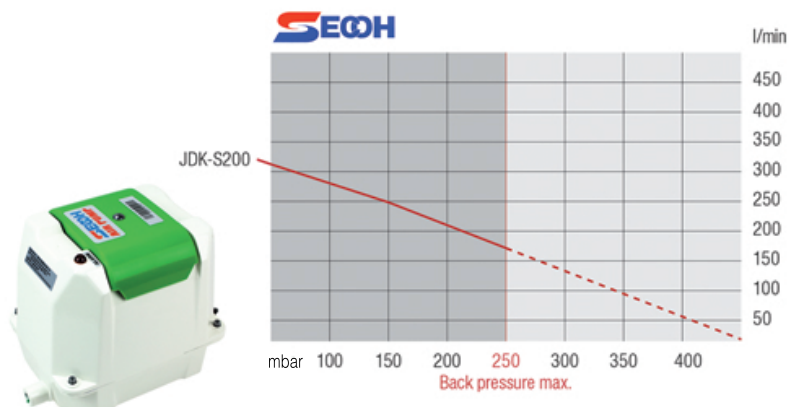
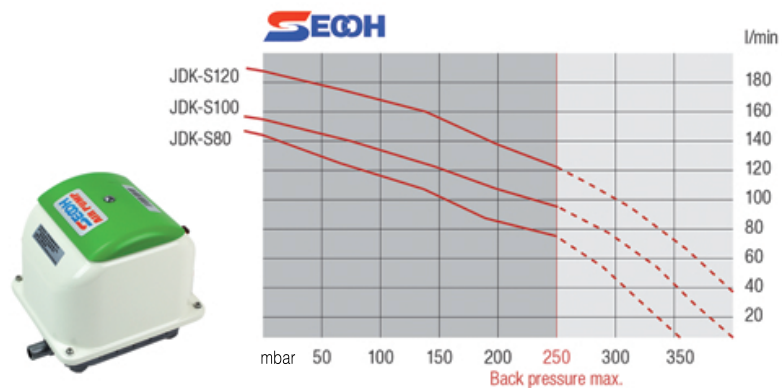
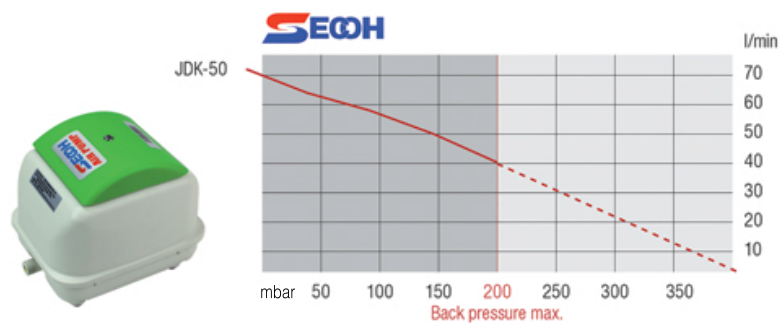
There are lots of air pumps on the market but if you want one that is dependable, sturdy and offers great performance at all times, then we recommend the Secoh range of air pumps. Secoh is a Japanese manufacturer that has attained an excellent reputation for the aforementioned reasons. Secoh has a wide range of air pumps in various sizes and capacities.

Secoh pumps are near silent and operate with low vibrations. The motor and parts of the pump are all incased in an one-piece housing. The pumps guarantee a long operating lifespan.

The principle of electromagnetic oscillation, which is something the Secoh pumps all offer, is that during operation there is virtually no friction in the mechanism. This minimizes energy consumption and allows a higher degree of efficiency. The oil-free working guarantees a dry and unadulterated air flow. The specially designed casing and materials lower the vibration and noise to a bare minimum.

General specifications SECOH air pumps:

- Energy efficient
- Environmentally friendly
- Safe operating
- Simple usage
- Efficient technology
- Low noise levels
- Low vibration
- High air output
- Long lifespan
- 2 year warranty



AIR PUMP

B2010009



JDK-50

Measurements L x W x H	221 x 177 x 200 mm
Flow	50 l/m at 150 mbar
Outlet	19 mm
Consumption	42 Watt
Weight	4,5 kg

AIR PUMP

B2010010



JDK-S80

Measurements L x W x H	214 x 185 x 211 mm
Flow	85 l/m at 200 mbar
Outlet	19 mm
Consumption	50 Watt
Weight	6,5 kg

AIR PUMP

B2010011



JDK-S100

Measurements L x W x H	214 x 185 x 211 mm
Flow	108 l/m at 200 mbar
Outlet	19 mm
Consumption	75 Watt
Weight	6,5 kg

AIR PUMP

B2010012



JDK-S120

Measurements L x W x H	214 x 185 x 211 mm
Flow	138 l/m at 200 mbar
Outlet	19 mm
Consumption	95 Watt
Weight	6,5 kg

AIR PUMP

B2010013



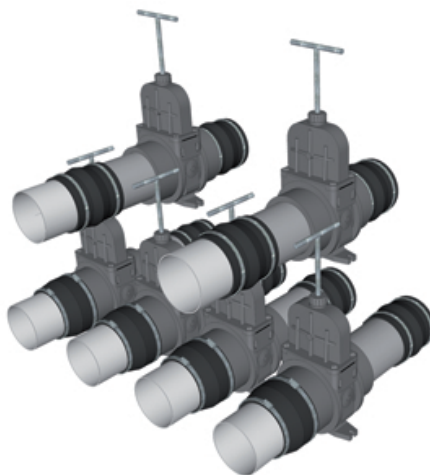
JDK-S200

Afmetingen L x B x H	240 x 180 x 230,5 mm
Flow	215 l/m bij 200 mbar
Outlet	26 mm
Consumption	120 Watt
Weight	10 kg

RUBBER COUPLINGS

It is preferable that flexible, rubber couplings are used when connecting piping as this will absorb vibrations and cover small differences in sizing.

Flexible rubber couplings have a number of advantages when used in combination with PVC piping. Rubber for example is extremely well suited for coupling materials that are not very responsive and difficult to glue; such as stainless steel, PP, PE, concrete and polyester.



Due to the flexibility in rubber, minor size differences can be nulled. Another advantage is in the case of maintenance, dismantling or temporary set-ups, removing and reusing the rubber couplings is easy and no glue is required at the joints. Applying rubber couplings can also be carried out when conditions are freezing and bonding is not possible. In the event of a burst pipe due to freezing, a rubber coupling can offer an emergency repair option. Rubber couplings also decrease operating stress and prevent breakages in PVC piping because of the dampened vibrations.

Basically, rubber couplings offer far more advantages than other options.

PIPECONX
UNIVERSAL PIPE CONNECTORS



PIPECONX RUBBER

H1050000



ELBOWS

H1050005	50 mm
H1050006	63 mm
H1050007	90 mm
H1050008	110 mm

PIPECONX RUBBER

H1050000



TEES

H1050015	50 mm
H1050016	63 mm
H1050017	90 mm
H1050018	110 mm

PIPECONX RUBBER

H1050000



SOCKETS

H1050009	50 mm
H1050010	63 mm
H1050011	90 mm
H1050012	110 mm
H1050013	125 mm
H1050014	160 mm

PIPECONX RUBBER

H1050000



COUPLINGS

H1050019	50 x 63 mm
H1050020	63 x 90 mm
H1050021	63 x 110 mm
H1050022	110 x 125 mm
H1050023	110 x 160 mm

PIPECONX RUBBER

H1050000



CAPS

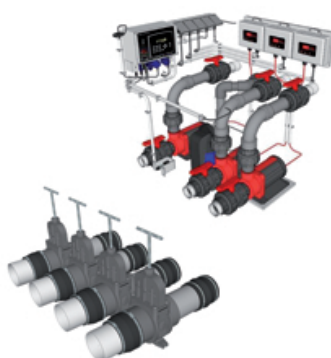
H1050001	50 mm
H1050002	63 mm
H1050003	90 mm
H1050004	110 mm

PLUG & PLAY FILTERS CUSTOM ADJUSTMENTS

Red Label Plug & Play systems can be completely customized to fit your needs and situation requirements. The changes made to a filter can include virtually everything including the materials and connecting pieces in the outer chambers. This allows unique and specific customization to your filter system. Should you opt to choose for our recommendations we offer you these alterations made at a discounted price.

Below you can view the possible options available for Plug & Play filter systems.

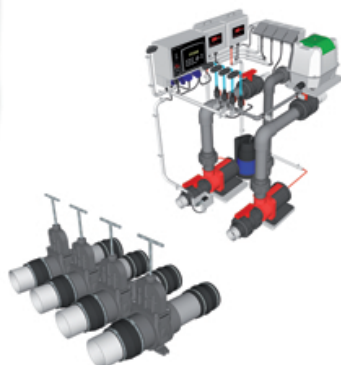
DRUMFILTER



PLUG & PLAY M

- F3000001** Ball valve 63 mm
- F3000003** VDL gate valve 110 mm
includes pipeconx couplings and piping
- F3000012** 1x Red Label pump ANP 13.000 en
1x Red Label pump ANP 20.000 Incl pipeconx
- F3000014** 2x Red Label pump ANP 20.000 Incl pipeconx
- F3000015** 1x Flowfriend junior includes pipeconx
- F3000008** 1x submersible pump Aquaking Q50011

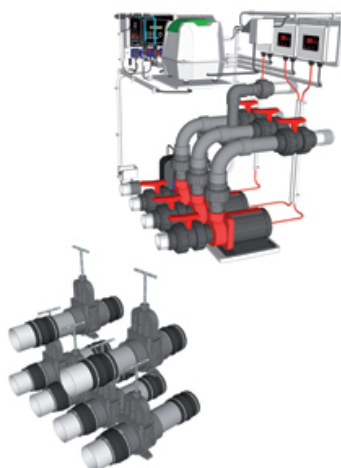
COMBIFILTER



PLUG & PLAY L

- F3000001** Ball valve 63 mm
- F3000003** VDL gate valve 110 mm
includes pipeconx couplings and piping
- F3000012** 1x Red Label pump ANP 13.000 en
1x Red Label pump ANP 20.000 Incl pipeconx
- F3000014** 2x Red Label pump ANP 20.000 Incl pipeconx
- F3000015** 1x Flowfriend junior includes pipeconx
- F3000008** 1x submersible pump Aquaking Q50011
- B2010009** 1x Secoh JDK 50 includes couplings
- B2010010** 1x Secoh JDK S-80 includes couplings
- B2010011** 1x Secoh JDK S-100 includes couplings

COMBIFILTER



PLUG & PLAY XL

- F3000001** Ball valve 63 mm
- F3000003** VDL gate valve 110 mm
includes pipeconx couplings and piping
- F3000012** 1x Red Label pump ANP 13.000 en
1x Red Label pump ANP 20.000 Incl pipeconx
- F3000014** 2x Red Label pump ANP 20.000 Incl pipeconx
- F3000015** 1x Flowfriend junior includes pipeconx
- F3000008** 1x submersible pump Aquaking Q50011
- B2010010** 1x Secoh JDK S-80 includes couplings
- B2010011** 1x Secoh JDK S-100 includes couplings
- B2010012** 1x Secoh JDK S-120 includes couplings

PARTS & COMPONENTS

We strive to produce and develop durable, long lasting and sustainable products. We also offer appropriate guarantees and services for all our Red Label products. All components are available and supplied by us in the event that your filter system requires a replacement part. Should it be that one of the parts and components is not listed on the following pages, we will gladly help you in acquiring the necessary parts wherever possible. Simply send an email to; info@aquaking.nl

MAINTENANCE

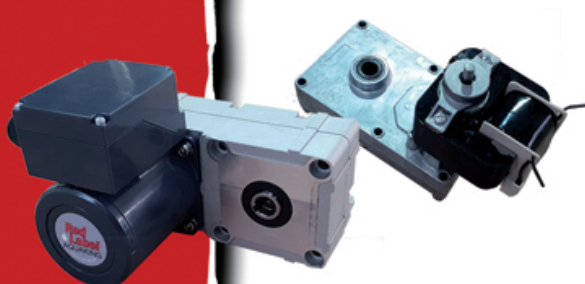


GREASE

F2100004 40 ml

Info: Dry or wet applicable.

DRUMFILTERS



DRIVE MOTORS

O1080002 Drum- en combifilters
O1080008 Basic 2 drum- en combifilters

DRUMFILTERS



STAINLESS STEEL PANELS

O1100002 1000 x 400 mm
O1100003 400 x 500 mm
O1100004 400 x 650 mm
O1210016 1000 x 400 mm Basic 2 filters

DRUMFILTERS



FLUSH PUMPS

O1020001 Standard
O1020002 Standard +
W1020006 Q800103 tbv Basic 2 filters

DRUMFILTERS

MISCELLANEOUS

F210005

Spraynozzle complete



COMPONENTS

SUBMERSIBLE PUMPS

W1020007

Q50011 internal float
10000 l/h, 8,5 mwk, 500 Watt

W1020011

Q1000V2 external float
20000 l/h, 9 mwk, 1000 Watt



DRUMFILTERS

OPERATING SYSTEMS

O1140004

Controller box

O1210001

Controller box Basic filters



DRUMFILTERS

CONTROL SYSTEMS

O1140014

Pressure sensor

O1140006

Powercable for pressure sensor

O1210015

Float for Basic 2



COMPONENTS

REFILL SYSTEM

O1210000

Refill system complete



PVC MATERIALS



GATE VALVES

H1130070	VDL 63 mm
H1130071	VDL 110 mm

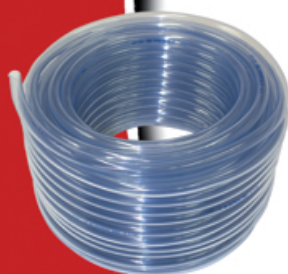
PVC MATERIALS



BALL VALVES INDUSTRY

H1130013	20 mm
H1130014	25 mm
H1130015	32 mm
H1130016	40 mm
H1130018	50 mm
H1130019	63 mm
H1130020	75 mm
H1130021	110 mm

AERATION



AIR HOSE

S2010001	7-10 mm
S2010003	9-12 mm
S2010005	10-14 mm
S2010007	12-16 mm
S2010009	14-18 mm
S2010011	19-23 mm

Info: 50 metres/roll.

AERATION



AIR DISTRIBUTION SETS

B2030001	1 connector
B2030002	2 connectors
B2030003	3 connectors
B2030004	4 connectors
B2030005	5 connectors
B2030006	6 connectors

AERATION



AIR TUBES

B2020001	30 x 130
B2020002	40 x 210
B2020003	50 x 150
B2020004	50 x 300

FILTERMATERIALS



TRICKLE SANSAI FILTERROCK

810270

Bag 5 kg



FILTERMATERIALS



TRICKLE SANSAI CRISTAL BIO

810206

Box 96 litres



FILTERMATERIALS



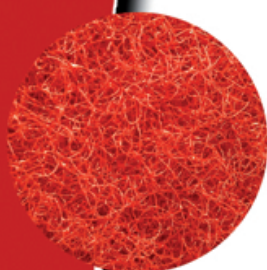
BIOCARRIER 955 m²/m³

B1020004

Biocarrier bag 100 liter



FILTERMATERIALS



RED-X MATS

690104

Complete roll 30,1 meter

810195

Filtermat 50 x 50 x 5,08 cm

810190

Filtermat 100 x 100 x 5,08 cm

810191

Filtermat 120 x 80 x 5,08 cm

810185

Filtermat 200 x 100 x 5,08 cm



FILTERMATERIALS



SANSAI FILTER BRUSHES

810170

Filterbrush 15 x 40 cm

810175

Filterbrush 15 x 50 cm

810180

Filterbrush 15 x 60 cm



UVC



REPLACEMENT LAMPS

F1050051
F1050052
RLM0001

JUVC 40 Watt
JUVC 80 Watt
Built-in unit 40 Watt



UVC



QUARTZ GLASS

F1050026
Q50001

JUVC 40 & 80 Watt
Built-in unit 40 Watt

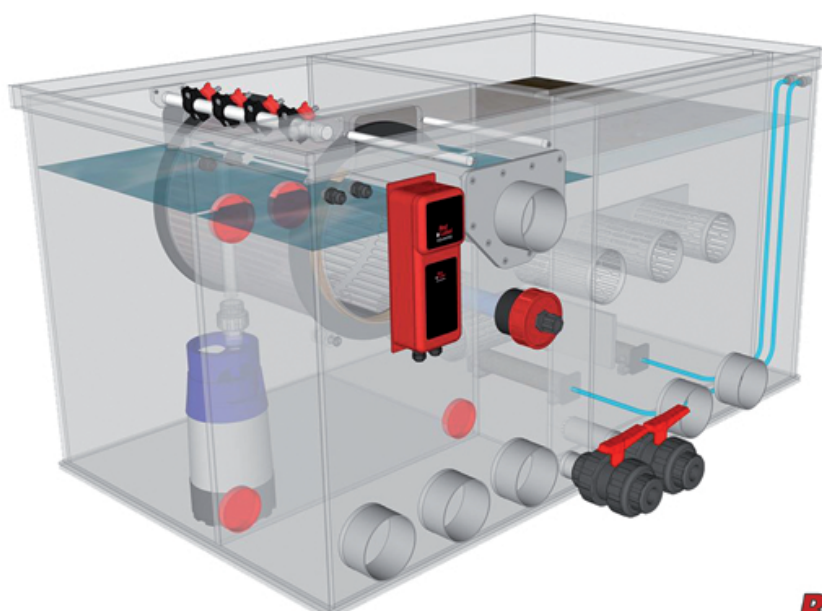
UVC



BALLAST

F1050021
F1050022
F1050023

JUVC 40 Watt
JUVC 80 Watt
Built-in unit 40 Watt



POND PUMPS



ACP

F1050000	3-part coupling 1½" 50 mm
F1050002	Casing 13.000 - 20.000
F1050003	Casing 6.500 - 10.000
F1050016	Hose connector 2" 13.000 - 20.000
F1050015	Hose connector 1½" 6.500 - 10.000
F1050020	Seals 13.000 - 20.000
F1050021	Seals 6.500 - 10.000

POND PUMPS



ANP

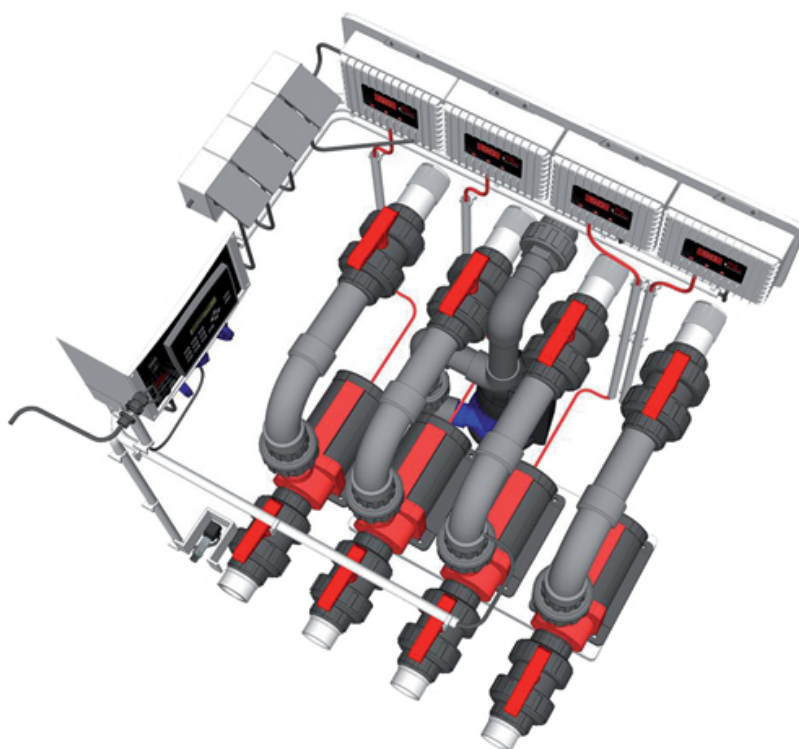
F1050001	3-part coupling 2" 63 mm
F1050004	Base plate 13.000 - 20.000
F1050005	Base plate 6.500 - 10.000
F1050014	Hose connector 2" 13.000 - 20.000
F1050013	Hose connector 1½" 6.500 - 10.000
F1050017	Dirt basket 2" 13.000 - 20.000
F1050018	Dirt basket 1½" 6.500 - 10.000
F1050020	Seals 13.000 - 20.000
F1050021	Seals 6.500 - 10.000

POND PUMPS



ANP & ACP

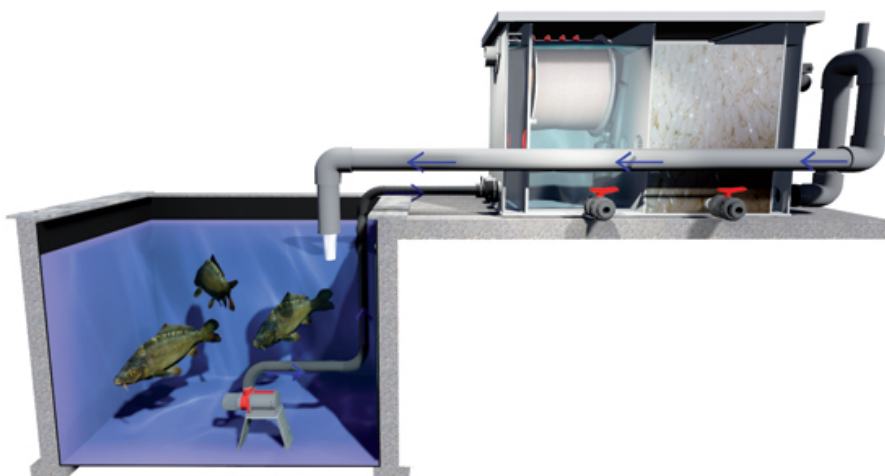
F1050002	Controller box 13.000 - 20.000
F1050003	Controller box 6.500 - 10.000
F1050010	Rotor NEW 13.000 - 20.000
F1050011	Rotor 13.000 - 20.000
F1050012	Rotor 6.500 - 10.000
F1050008	Pump housing 13.000 - 20.000
F1050009	Pump housing 6.500 - 10.000



FILTER SET-UPS.

Pump-fed filter set-up.

If your filter is placed above water level, the water must be transported to the filter by a pond pump. After the last filter chamber the water flows 'freely' back to the pond. This is called a 'pump fed' system.



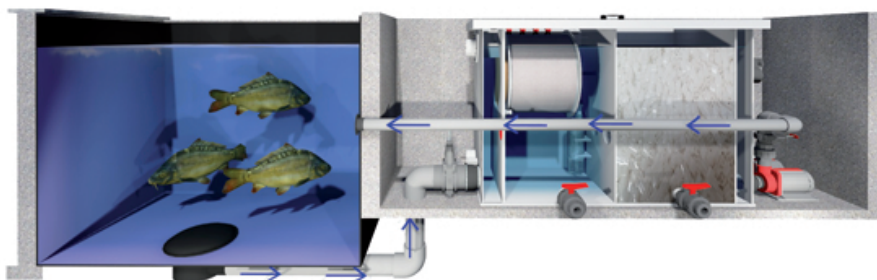
Gravity filter set-up.

Preference is given to placing the filter under water level of the pond. By gravity your filter runs full of water. A pump moves the water from your filter back towards the pond.

This filter set-up is called a 'gravity' system. Gravity set-up is preferable because a pump has to work less hard and therefore yields more efficiency and works more economically.

If your pump fails, water will still remain in the filter system, which will benefit your filter material. In case of faults on the pond system, there is no danger that the pump will empty the pond, the pond can not drain further than the depth of the filter. There is no pump or pond hose in the pond which looks nicer. In addition, fish can not be damaged here.

You can easily reach the pump for possible maintenance.



V18.03.01 Copyright © 2018 Aquaking Red Label, Rosmalen.

No part of this publication may be reproduced, stored in an automated database or made public in any form or any other means, electronic, mechanical, digital or photocopying without strict prior written permission from the author.

